

Anti-IDH3 beta Antibody

Rabbit polyclonal antibody to IDH3 beta

Catalog # AP60181

Product Information

Application	WB
Primary Accession	O43837
Reactivity	Human, Mouse, Rat, Monkey, Pig, Bovine
Host	Rabbit
Clonality	Polyclonal
Calculated MW	42184

Additional Information

Gene ID	3420
Other Names	Isocitrate dehydrogenase [NAD] subunit beta mitochondrial; Isocitric dehydrogenase subunit beta; NAD(+)-specific ICDH subunit beta
Target/Specificity	Recognizes endogenous levels of IDH3 beta protein.
Dilution	WB~~WB (1/500 - 1/1000)
Format	Liquid in 0.42% Potassium phosphate, 0.87% Sodium chloride, pH 7.3, 30% glycerol, and 0.09% (W/V) sodium azide.
Storage	Store at -20 °C.Stable for 12 months from date of receipt

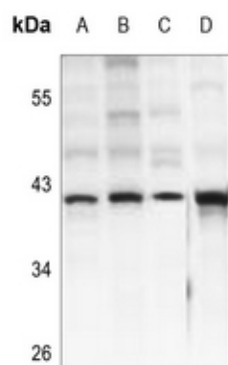
Protein Information

Name	IDH3B
Function	Plays a structural role to facilitate the assembly and ensure the full activity of the enzyme catalyzing the decarboxylation of isocitrate (ICT) into alpha-ketoglutarate. The heterodimer composed of the alpha (IDH3A) and beta (IDH3B) subunits and the heterodimer composed of the alpha (IDH3A) and gamma (IDH3G) subunits, have considerable basal activity but the full activity of the heterotetramer (containing two subunits of IDH3A, one of IDH3B and one of IDH3G) requires the assembly and cooperative function of both heterodimers.
Cellular Location	Mitochondrion.

Background

KLH-conjugated synthetic peptide encompassing a sequence within the center region of human IDH3 beta. The exact sequence is proprietary.

Images



Western blot analysis of IDH3 beta expression in U87MG (A), HEK293T (B), EC9706 (C), mouse brain (D) whole cell lysates.

Please note: All products are 'FOR RESEARCH USE ONLY. NOT FOR USE IN DIAGNOSTIC OR THERAPEUTIC PROCEDURES'.