

# Anti-Kallikrein 7 Antibody

Rabbit polyclonal antibody to Kallikrein 7  
Catalog # AP60186

## Product Information

Application	WB
Primary Accession	<a href="#">P49862</a>
Other Accession	<a href="#">Q91VE3</a>
Reactivity	Human, Mouse, Rat
Host	Rabbit
Clonality	Polyclonal
Calculated MW	27525

## Additional Information

Gene ID	5650
Other Names	PRSS6; SCCE; Kallikrein-7; hK7; Serine protease 6; Stratum corneum chymotryptic enzyme; hSCCE
Target/Specificity	KLH-conjugated synthetic peptide encompassing a sequence within the N-term region of human Kallikrein 7. The exact sequence is proprietary.
Dilution	WB~~WB (1/500 - 1/1000)
Format	Liquid in 0.42% Potassium phosphate, 0.87% Sodium chloride, pH 7.3, 30% glycerol, and 0.09% (W/V) sodium azide.
Storage	Store at -20 °C.Stable for 12 months from date of receipt

## Protein Information

Name	KLK7
Synonyms	PRSS6, SCCE
Function	May catalyze the degradation of intercellular cohesive structures in the cornified layer of the skin in the continuous shedding of cells from the skin surface. Specific for amino acid residues with aromatic side chains in the P1 position. Cleaves insulin A chain at '14-Tyr- -Gln-15' and insulin B chain at '6-Leu- -Cys-7', '16-Tyr- -Leu-17', '25-Phe- -Tyr-26' and '26-Tyr- -Thr-27'. Could play a role in the activation of precursors to inflammatory cytokines.
Cellular Location	Secreted. Note=In ovarian carcinoma, secreted and also observed at the apical membrane and in cytoplasm at the invasive front  Abundantly expressed in the skin and is expressed by keratinocytes in the

## Tissue Location

epidermis. Also expressed in the brain, mammary gland, cerebellum, spinal cord and kidney. Lower levels in salivary glands, uterus, thymus, thyroid, placenta, trachea and testis. Up- regulated in ovarian carcinoma, especially late-stage serous carcinoma, compared with normal ovaries and benign adenomas (at protein level)

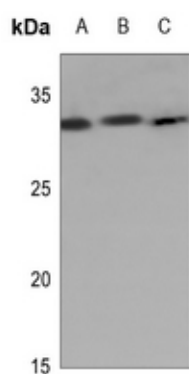
## Background

---

KLH-conjugated synthetic peptide encompassing a sequence within the N-term region of human Kallikrein 7. The exact sequence is proprietary.

## Images

---



Western blot analysis of Kallikrein 7 expression in HEK293T (A), A549 (B), MCF7 (C) whole cell lysates.

Please note: All products are 'FOR RESEARCH USE ONLY. NOT FOR USE IN DIAGNOSTIC OR THERAPEUTIC PROCEDURES'.