

Anti-M-CSF Antibody

Rabbit polyclonal antibody to M-CSF

Catalog # AP60189

Product Information

Application	WB
Primary Accession	P09603
Other Accession	P07141
Reactivity	Human, Mouse, Rat
Host	Rabbit
Clonality	Polyclonal
Calculated MW	60179

Additional Information

Gene ID	1435
Other Names	Macrophage colony-stimulating factor 1; CSF-1; M-CSF; MCSF; Lanimostim
Target/Specificity	KLH-conjugated synthetic peptide encompassing a sequence within the C-term region of human M-CSF. The exact sequence is proprietary.
Dilution	WB~~WB (1/500 - 1/1000)
Format	Liquid in 0.42% Potassium phosphate, 0.87% Sodium chloride, pH 7.3, 30% glycerol, and 0.09% (W/V) sodium azide.
Storage	Store at -20 °C.Stable for 12 months from date of receipt

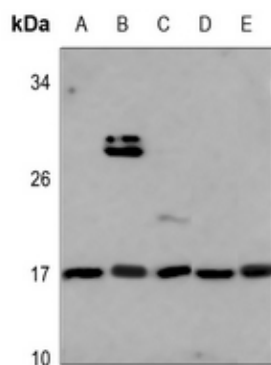
Protein Information

Name	CSF1
Function	Cytokine that plays an essential role in the regulation of survival, proliferation and differentiation of hematopoietic precursor cells, especially mononuclear phagocytes, such as macrophages and monocytes. Promotes the release of pro-inflammatory chemokines, and thereby plays an important role in innate immunity and in inflammatory processes. Plays an important role in the regulation of osteoclast proliferation and differentiation, the regulation of bone resorption, and is required for normal bone development. Required for normal male and female fertility. Promotes reorganization of the actin cytoskeleton, regulates formation of membrane ruffles, cell adhesion and cell migration. Plays a role in lipoprotein clearance.
Cellular Location	Cell membrane; Single-pass type I membrane protein

Background

KLH-conjugated synthetic peptide encompassing a sequence within the C-term region of human M-CSF. The exact sequence is proprietary.

Images



Western blot analysis of M-CSF expression in HEK293T (A), A549 (B), H1792 (C), mouse spleen (D), rat spleen (E) whole cell lysates.

Please note: All products are 'FOR RESEARCH USE ONLY. NOT FOR USE IN DIAGNOSTIC OR THERAPEUTIC PROCEDURES'.