

# Anti-Melatonin Receptor 1a Antibody

Rabbit polyclonal antibody to Melatonin Receptor 1a

Catalog # AP60190

## Product Information

---

Application	WB
Primary Accession	<a href="#">P48039</a>
Other Accession	<a href="#">Q61184</a>
Reactivity	Human, Mouse, Rat
Host	Rabbit
Clonality	Polyclonal
Calculated MW	39375

## Additional Information

---

Gene ID	4543
Other Names	Melatonin receptor type 1A; Mel-1A-R; Mel1a receptor
Target/Specificity	Recognizes endogenous levels of Melatonin Receptor 1a protein.
Dilution	WB~~WB (1/500 - 1/1000)
Format	Liquid in 0.42% Potassium phosphate, 0.87% Sodium chloride, pH 7.3, 30% glycerol, and 0.09% (W/V) sodium azide.
Storage	Store at -20 °C.Stable for 12 months from date of receipt

## Protein Information

---

Name	MTNR1A
Function	High affinity receptor for melatonin. Likely to mediate the reproductive and circadian actions of melatonin. The activity of this receptor is mediated by pertussis toxin sensitive G proteins that inhibit adenylate cyclase activity. Possibly involved in sleep induction, by melatonin activation of the potassium channel KCNMA1/BK and the dissociation of G-beta and G-gamma subunits, thereby decreasing synaptic transmission (By similarity).
Cellular Location	Cell membrane; Multi-pass membrane protein.
Tissue Location	Expressed in hypophyseal pars tuberalis and hypothalamic suprachiasmatic nuclei (SCN). Hippocampus

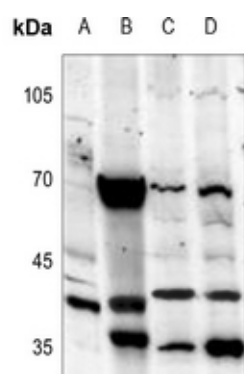
## Background

---

KLH-conjugated synthetic peptide encompassing a sequence within the center region of human Melatonin Receptor 1a. The exact sequence is proprietary.

## Images

---



Western blot analysis of Melatonin Receptor 1a expression in mouse brain (A), rat kidney (B), HEK293T (C), HCT116 (D) whole cell lysates.

Please note: All products are 'FOR RESEARCH USE ONLY. NOT FOR USE IN DIAGNOSTIC OR THERAPEUTIC PROCEDURES'.