

Anti-mGLUR1 Antibody

Rabbit polyclonal antibody to mGLUR1

Catalog # AP60191

Product Information

Application	WB
Primary Accession	Q13255
Other Accession	P97772
Reactivity	Human, Mouse, Rat
Host	Rabbit
Clonality	Polyclonal
Calculated MW	132357

Additional Information

Gene ID	2911
Other Names	GPRC1A; MGLUR1; Metabotropic glutamate receptor 1; mGluR1
Target/Specificity	Recognizes endogenous levels of mGLUR1 protein.
Dilution	WB~~WB (1/500 - 1/1000)
Format	Liquid in 0.42% Potassium phosphate, 0.87% Sodium chloride, pH 7.3, 30% glycerol, and 0.09% (W/V) sodium azide.
Storage	Store at -20 °C.Stable for 12 months from date of receipt

Protein Information

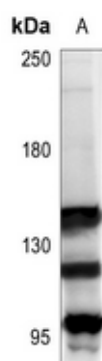
Name	GRM1
Synonyms	GPRC1A, MGLUR1
Function	<p>G-protein coupled receptor for glutamate. Ligand binding causes a conformation change that triggers signaling via guanine nucleotide-binding proteins (G proteins) and modulates the activity of down-stream effectors. Signaling activates a phosphatidylinositol- calcium second messenger system. May participate in the central action of glutamate in the CNS, such as long-term potentiation in the hippocampus and long-term depression in the cerebellum (PubMed:24603153, PubMed:28886343, PubMed:7476890). May function in the light response in the retina (By similarity). Induces GRID1 and GRID2 cation-channel activation via GNAQ-PLC-PKC pathway in dopaminergic neurons and cerebellar Purkinje cell, respectively (PubMed:24357660, PubMed:27276689).</p> <p>Cell membrane; Multi-pass membrane protein. Postsynaptic cell membrane;</p>

Cellular Location	Multi-pass membrane protein. Cell projection, dendrite {ECO:0000250 UniProtKB:P97772}. Note=Located in dendrioles, small dendrites that makes up a brush structure found as the terminal specialization of a dendrite of a unipolar brush cell {ECO:0000250 UniProtKB:P97772}
Tissue Location	Detected in brain..

Background

KLH-conjugated synthetic peptide encompassing a sequence within the center region of human mGLUR1. The exact sequence is proprietary.

Images



Western blot analysis of mGLUR1 expression in HeLa (A) whole cell lysates.

Please note: All products are 'FOR RESEARCH USE ONLY. NOT FOR USE IN DIAGNOSTIC OR THERAPEUTIC PROCEDURES'.