

Anti-MMP26 Antibody

Rabbit polyclonal antibody to MMP26

Catalog # AP60192

Product Information

Application	WB
Primary Accession	Q9NRE1
Reactivity	Human, Mouse, Rat, Monkey
Host	Rabbit
Clonality	Polyclonal
Calculated MW	29708

Additional Information

Gene ID	56547
Other Names	Matrix metalloproteinase-26; MMP-26; Endometase; Matrilysin-2
Target/Specificity	Recognizes endogenous levels of MMP26 protein.
Dilution	WB~~WB (1/500 - 1/1000)
Format	Liquid in 0.42% Potassium phosphate, 0.87% Sodium chloride, pH 7.3, 30% glycerol, and 0.09% (W/V) sodium azide.
Storage	Store at -20 °C.Stable for 12 months from date of receipt

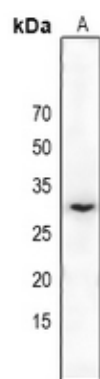
Protein Information

Name	MMP26
Function	May hydrolyze collagen type IV, fibronectin, fibrinogen, beta-casein, type I gelatin and alpha-1 proteinase inhibitor. Is also able to activate progelatinase B.
Cellular Location	Secreted, extracellular space, extracellular matrix
Tissue Location	Expressed specifically in uterus and placenta. Is also widely expressed in malignant tumors from different sources as well as in diverse tumor cell lines

Background

KLH-conjugated synthetic peptide encompassing a sequence within the center region of human MMP26. The exact sequence is proprietary.

Images



Western blot analysis of MMP26 expression in rat kidney (A) whole cell lysates.

Please note: All products are 'FOR RESEARCH USE ONLY. NOT FOR USE IN DIAGNOSTIC OR THERAPEUTIC PROCEDURES'.