

Anti-PICK1 Antibody

Rabbit polyclonal antibody to PICK1

Catalog # AP60199

Product Information

Application	WB
Primary Accession	Q9NRD5
Other Accession	Q62083
Reactivity	Human, Mouse, Rat, Monkey, Bovine
Host	Rabbit
Clonality	Polyclonal
Calculated MW	46600

Additional Information

Gene ID	9463
Other Names	PRKCABP; PRKCA-binding protein; Protein interacting with C kinase 1; Protein kinase C-alpha-binding protein
Target/Specificity	KLH-conjugated synthetic peptide encompassing a sequence within the C-term region of human PICK1. The exact sequence is proprietary.
Dilution	WB~~WB (1/500 - 1/1000)
Format	Liquid in 0.42% Potassium phosphate, 0.87% Sodium chloride, pH 7.3, 30% glycerol, and 0.09% (W/V) sodium azide.
Storage	Store at -20 °C.Stable for 12 months from date of receipt

Protein Information

Name	PICK1
Synonyms	PRKCABP
Function	Probable adapter protein that bind to and organize the subcellular localization of a variety of membrane proteins containing some PDZ recognition sequence. Involved in the clustering of various receptors, possibly by acting at the receptor internalization level. Plays a role in synaptic plasticity by regulating the trafficking and internalization of AMPA receptors. May be regulated upon PRKCA activation. May regulate ASIC1/ASIC3 channel. Regulates actin polymerization by inhibiting the actin-nucleating activity of the Arp2/3 complex; the function is competitive with nucleation promoting factors and is linked to neuronal morphology regulation and AMPA receptor (AMPA) endocytosis. Via interaction with the Arp2/3 complex involved in regulation of synaptic plasticity of excitatory synapses and required for spine

shrinkage during long-term depression (LTD). Involved in regulation of astrocyte morphology, antagonistic to Arp2/3 complex activator WASL/N-WASP function.

Cellular Location

Cytoplasm, perinuclear region {ECO:0000250|UniProtKB:Q9EP80}. Membrane {ECO:0000250|UniProtKB:Q9EP80}; Peripheral membrane protein {ECO:0000250|UniProtKB:Q9EP80}. Membrane {ECO:0000250|UniProtKB:Q62083}; Lipid-anchor {ECO:0000250|UniProtKB:Q62083}. Postsynaptic density {ECO:0000250|UniProtKB:Q9EP80}. Synapse, synaptosome {ECO:0000250|UniProtKB:Q9EP80}. Cytoplasm, cytoskeleton {ECO:0000250|UniProtKB:Q9EP80}. Note=Also membrane-associated, present at excitatory synapses. {ECO:0000250|UniProtKB:Q9EP80}

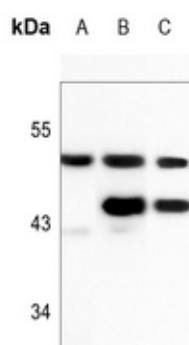
Tissue Location

Ubiquitous.

Background

KLH-conjugated synthetic peptide encompassing a sequence within the C-term region of human PICK1. The exact sequence is proprietary.

Images



Western blot analysis of PICK1 expression in Hela (A), mouse brain (B), rat brain (C) whole cell lysates.

Please note: All products are 'FOR RESEARCH USE ONLY. NOT FOR USE IN DIAGNOSTIC OR THERAPEUTIC PROCEDURES'.