

Anti-Pokemon Antibody

Rabbit polyclonal antibody to Pokemon
Catalog # AP60200

Product Information

Application	WB
Primary Accession	O95365
Other Accession	O88939
Reactivity	Human, Mouse, Rat
Host	Rabbit
Clonality	Polyclonal

Additional Information

Other Names	FBI1; LRF; ZBTB7; ZNF857A; Zinc finger and BTB domain-containing protein 7A; Factor binding IST protein 1; FBI-1; Factor that binds to inducer of short transcripts protein 1; HIV-1 1st-binding protein 1; Leukemia/lymphoma-related factor; POZ and Krueppel erythroid myeloid ontogenic factor; POK erythroid myeloid ontogenic factor; Pokemon; TTF-I-interacting peptide 21; TIP21; Zinc finger protein 857A
Target/Specificity	KLH-conjugated synthetic peptide encompassing a sequence within the center region of human Pokemon. The exact sequence is proprietary.
Dilution	WB--WB (1/500 - 1/1000)
Format	Liquid in 0.42% Potassium phosphate, 0.87% Sodium chloride, pH 7.3, 30% glycerol, and 0.09% (W/V) sodium azide.
Storage	Store at -20 °C. Stable for 12 months from date of receipt

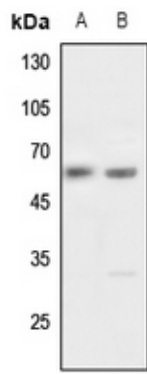
Protein Information

Background

KLH-conjugated synthetic peptide encompassing a sequence within the center region of human Pokemon. The exact sequence is proprietary.

Images

Western blot analysis of Pokemon expression in Hela (A), HGC27 (B) whole cell lysates.



Please note: All products are 'FOR RESEARCH USE ONLY. NOT FOR USE IN DIAGNOSTIC OR THERAPEUTIC PROCEDURES'.