

Anti-Prostasin HC Antibody

Rabbit polyclonal antibody to Prostasin HC
Catalog # AP60203

Product Information

Application	WB
Primary Accession	Q16651
Other Accession	Q9ESD1
Reactivity	Human, Mouse, Rat
Host	Rabbit
Clonality	Polyclonal
Calculated MW	36431

Additional Information

Gene ID	5652
Other Names	Prostasin; Channel-activating protease 1; CAP1; Serine protease 8
Target/Specificity	Recognizes endogenous levels of Prostasin HC protein.
Dilution	WB~~WB (1/500 - 1/1000)
Format	Liquid in 0.42% Potassium phosphate, 0.87% Sodium chloride, pH 7.3, 30% glycerol, and 0.09% (W/V) sodium azide.
Storage	Store at -20 °C.Stable for 12 months from date of receipt

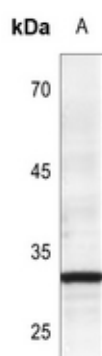
Protein Information

Name	PRSS8
Function	Possesses a trypsin-like cleavage specificity with a preference for poly-basic substrates. Stimulates epithelial sodium channel (ENaC) activity through activating cleavage of the gamma subunits (SCNN1G).
Cellular Location	[Prostasin]: Cell membrane; Single-pass membrane protein [Prostasin heavy chain]: Secreted, extracellular space. Note=Found in the seminal fluid. Secreted after cleavage of its C-terminus
Tissue Location	Found in prostate, liver, salivary gland, kidney, lung, pancreas, colon, bronchus and renal proximal tubular cells. In the prostate gland it may be synthesized in epithelial cells, secreted into the ducts, and excreted into the seminal fluid

Background

KLH-conjugated synthetic peptide encompassing a sequence within the N-term region of human Prostatic HC. The exact sequence is proprietary.

Images



Western blot analysis of Prostatic HC expression in HEK293T (A) whole cell lysates.

Please note: All products are 'FOR RESEARCH USE ONLY. NOT FOR USE IN DIAGNOSTIC OR THERAPEUTIC PROCEDURES'.