

# Anti-SEN6 Antibody

Rabbit polyclonal antibody to SENP6  
Catalog # AP60205

## Product Information

Application	WB, IHC
Primary Accession	<a href="#">Q9GZR1</a>
Other Accession	<a href="#">Q6P7W0</a>
Reactivity	Human, Mouse, Rat
Host	Rabbit
Clonality	Polyclonal
Calculated MW	126146

## Additional Information

Gene ID	26054
Other Names	KIAA0797; SSP1; SUSP1; Sentrin-specific protease 6; SUMO-1-specific protease 1; Sentrin/SUMO-specific protease SENP6
Target/Specificity	Recognizes endogenous levels of SENP6 protein.
Dilution	WB~~WB (1/500 - 1/1000), IHC (1/100 - 1/200) IHC~~WB (1/500 - 1/1000), IHC (1/100 - 1/200)
Format	Liquid in 0.42% Potassium phosphate, 0.87% Sodium chloride, pH 7.3, 30% glycerol, and 0.09% (W/V) sodium azide.
Storage	Store at -20 °C.Stable for 12 months from date of receipt

## Protein Information

Name	SEN6
Synonyms	KIAA0797, SSP1, SUSP1
Function	<p>Protease that deconjugates SUMO1, SUMO2 and SUMO3 from targeted proteins. Processes preferentially poly-SUMO2 and poly-SUMO3 chains, but does not efficiently process SUMO1, SUMO2 and SUMO3 precursors. Deconjugates SUMO1 from RXRA, leading to transcriptional activation. Involved in chromosome alignment and spindle assembly, by regulating the kinetochore CENPH-CENPI-CENPK complex. Desumoylates PML and CENPI, protecting them from degradation by the ubiquitin ligase RNF4, which targets polysumoylated proteins for proteasomal degradation. Also desumoylates RPA1, thus preventing recruitment of RAD51 to the DNA damage foci to initiate DNA repair through homologous recombination.</p>

**Cellular Location**

Nucleus

**Tissue Location**

Highly expressed in reproductive organs, such as testis, ovary and prostate

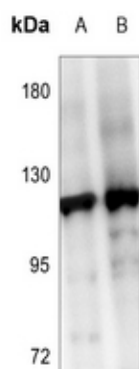
**Background**

---

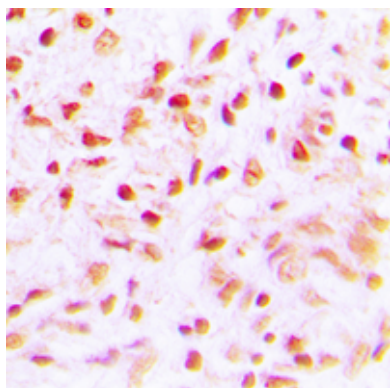
KLH-conjugated synthetic peptide encompassing a sequence within the C-term region of human SENP6. The exact sequence is proprietary.

**Images**

---



Western blot analysis of SENP6 expression in A2780 (A), HEK293T (B) whole cell lysates.



Immunohistochemical analysis of SENP6 staining in human lung cancer formalin fixed paraffin embedded tissue section. The section was pre-treated using heat mediated antigen retrieval with sodium citrate buffer (pH 6.0). The section was then incubated with the antibody at room temperature and detected using an HRP conjugated compact polymer system. DAB was used as the chromogen. The section was then counterstained with haematoxylin and mounted with DPX.

Please note: All products are 'FOR RESEARCH USE ONLY. NOT FOR USE IN DIAGNOSTIC OR THERAPEUTIC PROCEDURES'.