

# Anti-Septin 8 Antibody

Rabbit polyclonal antibody to Septin 8  
Catalog # AP60209

## Product Information

Application	WB
Primary Accession	<a href="#">Q92599</a>
Other Accession	<a href="#">Q8CHH9</a>
Reactivity	Human, Mouse, Rat, Rabbit, Monkey, Bovine
Host	Rabbit
Clonality	Polyclonal
Calculated MW	55756

## Additional Information

Gene ID	23176
Other Names	KIAA0202; Septin-8
Target/Specificity	Recognizes endogenous levels of Septin 8 protein.
Dilution	WB~~WB (1/500 - 1/1000)
Format	Liquid in 0.42% Potassium phosphate, 0.87% Sodium chloride, pH 7.3, 30% glycerol, and 0.09% (W/V) sodium azide.
Storage	Store at -20 °C.Stable for 12 months from date of receipt

## Protein Information

Name	SEPTIN8 ( <a href="#">HGNC:16511</a> )
Function	Filament-forming cytoskeletal GTPase (By similarity). May play a role in platelet secretion (PubMed: <a href="#">15116257</a> ). Seems to participate in the process of SNARE complex formation in synaptic vesicles (By similarity).
Cellular Location	Cytoplasm {ECO:0000250 UniProtKB:B0BNF1}. Cytoplasm, cytoskeleton. Synapse {ECO:0000250 UniProtKB:B0BNF1}. Cell projection, axon {ECO:0000250 UniProtKB:B0BNF1}. Cytoplasmic vesicle, secretory vesicle, synaptic vesicle membrane {ECO:0000250 UniProtKB:B0BNF1}. Presynapse {ECO:0000250 UniProtKB:B0BNF1}. Note=Expressed in axons of immature neurons, localizes to synapses in mature neurons (By similarity). In platelets, found in areas surrounding alpha-granules (PubMed:15116257) {ECO:0000250 UniProtKB:B0BNF1, ECO:0000269 PubMed:15116257}
Tissue Location	Widely expressed, including in brain, heart and platelets; most abundant in aorta. Isoform 2 is expressed at low levels in specific brain areas, such as

occipital pole, frontal lobe, temporal lobe and putamen. Isoform 1 and 3 are highly expressed in specific brain areas, such as occipital pole, frontal lobe, temporal lobe and putamen. Isoform 2 is highly expressed in prostate, testis and ovary. Isoform 1 and isoform 3 are expressed at low levels in prostate, testis and ovary.

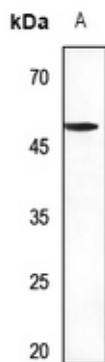
## Background

---

KLH-conjugated synthetic peptide encompassing a sequence within the center region of human Septin 8. The exact sequence is proprietary.

## Images

---



Western blot analysis of Septin 8 expression in rat brain (A) whole cell lysates.

Please note: All products are 'FOR RESEARCH USE ONLY. NOT FOR USE IN DIAGNOSTIC OR THERAPEUTIC PROCEDURES'.