

Anti-A2M Antibody

Rabbit polyclonal antibody to A2M

Catalog # AP60210

Product Information

Application	WB
Primary Accession	P01023
Reactivity	Human, Rat, Monkey
Host	Rabbit
Clonality	Polyclonal
Calculated MW	163291

Additional Information

Gene ID	2
Other Names	CPAMD5; Alpha-2-macroglobulin; Alpha-2-M; C3 and PZP-like alpha-2-macroglobulin domain-containing protein 5
Target/Specificity	KLH-conjugated synthetic peptide encompassing a sequence within the center region of human A2M. The exact sequence is proprietary.
Dilution	WB~~WB (1/500 - 1/1000)
Format	Liquid in 0.42% Potassium phosphate, 0.87% Sodium chloride, pH 7.3, 30% glycerol, and 0.09% (W/V) sodium azide.
Storage	Store at -20 °C.Stable for 12 months from date of receipt

Protein Information

Name	A2M
Synonyms	CPAMD5
Function	Is able to inhibit all four classes of proteinases by a unique 'trapping' mechanism. This protein has a peptide stretch, called the 'bait region' which contains specific cleavage sites for different proteinases. When a proteinase cleaves the bait region, a conformational change is induced in the protein which traps the proteinase. The entrapped enzyme remains active against low molecular weight substrates (activity against high molecular weight substrates is greatly reduced). Following cleavage in the bait region, a thioester bond is hydrolyzed and mediates the covalent binding of the protein to the proteinase.
Cellular Location	Secreted.

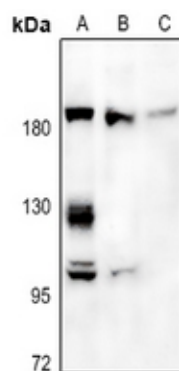
Tissue Location

Secreted in plasma..

Background

KLH-conjugated synthetic peptide encompassing a sequence within the center region of human A2M. The exact sequence is proprietary.

Images



Western blot analysis of A2M expression in A375 (A), LO2 (B), PC12 (C) whole cell lysates.

Please note: All products are 'FOR RESEARCH USE ONLY. NOT FOR USE IN DIAGNOSTIC OR THERAPEUTIC PROCEDURES'.