

Anti-ACC alpha (pS80) Antibody

Rabbit polyclonal antibody to ACC alpha (pS80)

Catalog # AP60211

Product Information

Application	WB, IHC
Primary Accession	Q13085
Other Accession	Q5SWU9
Reactivity	Human, Mouse, Rat, Pig, Bovine, SARS
Host	Rabbit
Clonality	Polyclonal
Calculated MW	265554

Additional Information

Gene ID	31
Other Names	ACAC; ACC1; ACCA; Acetyl-CoA carboxylase 1; ACC1; ACC-alpha
Target/Specificity	Recognizes endogenous levels of ACC alpha (pS80) protein.
Dilution	WB~~WB (1/500 - 1/1000), IHC (1/100 - 1/200) IHC~~WB (1/500 - 1/1000), IHC (1/100 - 1/200)
Format	Liquid in 0.42% Potassium phosphate, 0.87% Sodium chloride, pH 7.3, 30% glycerol, and 0.09% (W/V) sodium azide.
Storage	Store at -20 °C.Stable for 12 months from date of receipt

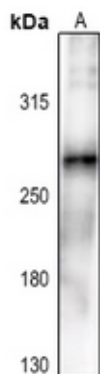
Protein Information

Name	ACACA (HGNC:84)
Synonyms	ACAC, ACC1, ACCA
Function	Cytosolic enzyme that catalyzes the carboxylation of acetyl- CoA to malonyl-CoA, the first and rate-limiting step of de novo fatty acid biosynthesis (PubMed: 20457939 , PubMed: 20952656 , PubMed: 29899443). This is a 2 steps reaction starting with the ATP-dependent carboxylation of the biotin carried by the biotin carboxyl carrier (BCC) domain followed by the transfer of the carboxyl group from carboxylated biotin to acetyl-CoA (PubMed: 20457939 , PubMed: 20952656 , PubMed: 29899443).
Cellular Location	Cytoplasm, cytosol {ECO:0000250 UniProtKB:Q5SWU9}
Tissue Location	Expressed in brain, placenta, skeletal muscle, renal, pancreatic and adipose tissues; expressed at low level in pulmonary tissue; not detected in the liver

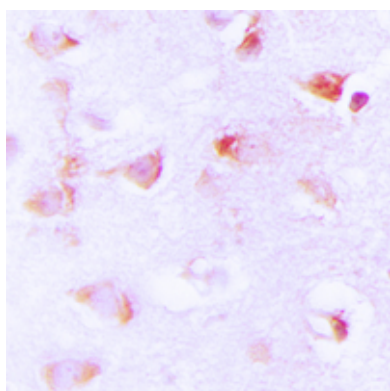
Background

KLH-conjugated synthetic peptide encompassing a sequence within the N-term region of human ACC alpha (pS80). The exact sequence is proprietary.

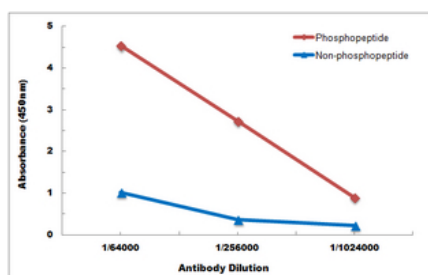
Images



Western blot analysis of ACC alpha (pS80) expression in HEK293T (A) whole cell lysates.



Immunohistochemical analysis of ACC alpha (pS80) staining in human brain formalin fixed paraffin embedded tissue section. The section was pre-treated using heat mediated antigen retrieval with sodium citrate buffer (pH 6.0). The section was then incubated with the antibody at room temperature and detected using an HRP conjugated compact polymer system. DAB was used as the chromogen. The section was then counterstained with haematoxylin and mounted with DPX.



Direct ELISA antibody dose-response curve using Anti-ACC alpha (pS80) Antibody. Antigen (phosphopeptide and non-phosphopeptide) concentration is 5 ug/ml. Goat Anti-Rabbit IgG (H&L) - HRP was used as the secondary antibody, and signal was developed by TMB substrate.

Please note: All products are 'FOR RESEARCH USE ONLY. NOT FOR USE IN DIAGNOSTIC OR THERAPEUTIC PROCEDURES'.