

Anti-ACER2 Antibody

Rabbit polyclonal antibody to ACER2
Catalog # AP60212

Product Information

Application	WB
Primary Accession	Q5QJU3
Other Accession	Q8VD53
Reactivity	Human, Mouse, Rat, Monkey
Host	Rabbit
Clonality	Polyclonal

Additional Information

Other Names	ASAH3L; Alkaline ceramidase 2; AlkCDase 2; Alkaline CDase 2; haCER2; Acylsphingosine deacylase 3-like; N-acylsphingosine amidohydrolase 3-like
Target/Specificity	KLH-conjugated synthetic peptide encompassing a sequence within the center region of human ACER2. The exact sequence is proprietary.
Dilution	WB~~WB (1/500 - 1/1000)
Format	Liquid in 0.42% Potassium phosphate, 0.87% Sodium chloride, pH 7.3, 30% glycerol, and 0.09% (W/V) sodium azide.
Storage	Store at -20 °C. Stable for 12 months from date of receipt

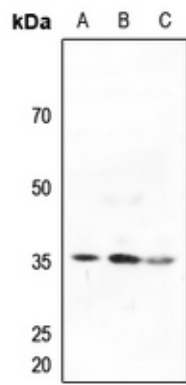
Protein Information

Background

KLH-conjugated synthetic peptide encompassing a sequence within the center region of human ACER2. The exact sequence is proprietary.

Images

Western blot analysis of ACER2 expression in Hela (A), H460 (B), A2780 (C) whole cell lysates.



Please note: All products are 'FOR RESEARCH USE ONLY. NOT FOR USE IN DIAGNOSTIC OR THERAPEUTIC PROCEDURES'.