

Anti-Amphiphysin 1 Antibody

Rabbit polyclonal antibody to Amphiphysin 1

Catalog # AP60218

Product Information

Application	WB
Primary Accession	P49418
Other Accession	Q7TQF7
Reactivity	Human, Mouse, Rat, Monkey, Bovine
Host	Rabbit
Clonality	Polyclonal
Calculated MW	76257

Additional Information

Gene ID	273
Other Names	AMPH1; Amphiphysin
Target/Specificity	Recognizes endogenous levels of Amphiphysin 1 protein.
Dilution	WB~~WB (1/500 - 1/1000)
Format	Liquid in 0.42% Potassium phosphate, 0.87% Sodium chloride, pH 7.3, 30% glycerol, and 0.09% (W/V) sodium azide.
Storage	Store at -20 °C.Stable for 12 months from date of receipt

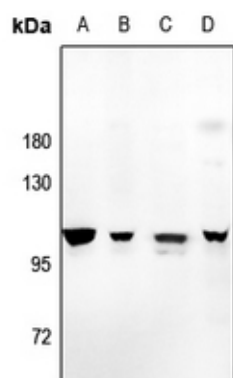
Protein Information

Name	AMPH
Synonyms	AMPH1
Function	May participate in mechanisms of regulated exocytosis in synapses and certain endocrine cell types. May control the properties of the membrane associated cytoskeleton.
Cellular Location	Cytoplasmic vesicle, secretory vesicle, synaptic vesicle membrane; Peripheral membrane protein; Cytoplasmic side Cytoplasm, cytoskeleton
Tissue Location	Neurons, certain endocrine cell types and spermatocytes

Background

KLH-conjugated synthetic peptide encompassing a sequence within the center region of human Amphiphysin 1. The exact sequence is proprietary.

Images



Western blot analysis of Amphiphysin 1 expression in U87MG (A), Panc1 (B), SHSY5Y (C), BV2 (D) whole cell lysates.

Please note: All products are 'FOR RESEARCH USE ONLY. NOT FOR USE IN DIAGNOSTIC OR THERAPEUTIC PROCEDURES'.