

Anti-Annexin A7 Antibody

Rabbit polyclonal antibody to Annexin A7
Catalog # AP60219

Product Information

Application	WB
Primary Accession	P20073
Other Accession	Q07076
Reactivity	Human, Mouse, Rabbit, Monkey, Pig, Bovine
Host	Rabbit
Clonality	Polyclonal

Additional Information

Other Names	ANX7; SNX; Annexin A7; Annexin VII; Annexin-7; Synexin
Target/Specificity	KLH-conjugated synthetic peptide encompassing a sequence within the center region of human Annexin A7. The exact sequence is proprietary.
Dilution	WB~WB (1/500 - 1/1000)
Format	Liquid in 0.42% Potassium phosphate, 0.87% Sodium chloride, pH 7.3, 30% glycerol, and 0.09% (W/V) sodium azide.
Storage	Store at -20 °C. Stable for 12 months from date of receipt

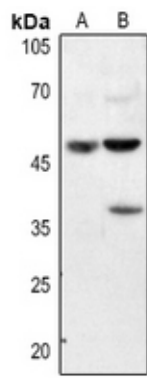
Protein Information

Background

KLH-conjugated synthetic peptide encompassing a sequence within the center region of human Annexin A7. The exact sequence is proprietary.

Images

Western blot analysis of Annexin A7 expression in HEK293T (A), Hela (B) whole cell lysates.



Please note: All products are 'FOR RESEARCH USE ONLY. NOT FOR USE IN DIAGNOSTIC OR THERAPEUTIC PROCEDURES'.