

# Anti-Apolipoprotein L1 Antibody

Rabbit polyclonal antibody to Apolipoprotein L1

Catalog # AP60221

## Product Information

---

<b>Application</b>	WB
<b>Primary Accession</b>	<a href="#">O14791</a>
<b>Reactivity</b>	Human
<b>Host</b>	Rabbit
<b>Clonality</b>	Polyclonal
<b>Calculated MW</b>	43974

## Additional Information

---

<b>Gene ID</b>	8542
<b>Other Names</b>	APOL; Apolipoprotein L1; Apolipoprotein L; Apo-L; ApoL; Apolipoprotein L-I; ApoL-I
<b>Target/Specificity</b>	KLH-conjugated synthetic peptide encompassing a sequence within the center region of human Apolipoprotein L1. The exact sequence is proprietary.
<b>Dilution</b>	WB~~WB (1/500 - 1/1000)
<b>Format</b>	Liquid in 0.42% Potassium phosphate, 0.87% Sodium chloride, pH 7.3, 30% glycerol, and 0.09% (W/V) sodium azide.
<b>Storage</b>	Store at -20 °C.Stable for 12 months from date of receipt

## Protein Information

---

<b>Name</b>	APOL1
<b>Synonyms</b>	APOL
<b>Function</b>	May play a role in lipid exchange and transport throughout the body. May participate in reverse cholesterol transport from peripheral cells to the liver.
<b>Cellular Location</b>	Secreted.
<b>Tissue Location</b>	Plasma. Found on APOA-I-containing high density lipoprotein (HDL3). Expressed in pancreas, lung, prostate, liver, placenta and spleen

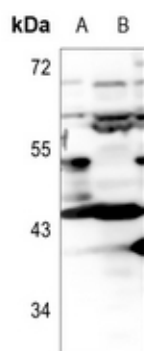
## Background

---

KLH-conjugated synthetic peptide encompassing a sequence within the center region of human Apolipoprotein L1. The exact sequence is proprietary.

## Images

---



Western blot analysis of Apolipoprotein L1 expression in HEK293T (A), A549 (B) whole cell lysates.

Please note: All products are 'FOR RESEARCH USE ONLY. NOT FOR USE IN DIAGNOSTIC OR THERAPEUTIC PROCEDURES'.