

Anti-Arylsulfatase B Antibody

Rabbit polyclonal antibody to Arylsulfatase B

Catalog # AP60224

Product Information

Application	WB
Primary Accession	P15848
Other Accession	P50429
Reactivity	Human, Mouse, Rat
Host	Rabbit
Clonality	Polyclonal
Calculated MW	59687

Additional Information

Gene ID	411
Other Names	Arylsulfatase B; ASB; N-acetylgalactosamine-4-sulfatase; G4S
Target/Specificity	Recognizes endogenous levels of Arylsulfatase B protein.
Dilution	WB~~WB (1/500 - 1/1000)
Format	Liquid in 0.42% Potassium phosphate, 0.87% Sodium chloride, pH 7.3, 30% glycerol, and 0.09% (W/V) sodium azide.
Storage	Store at -20 °C.Stable for 12 months from date of receipt

Protein Information

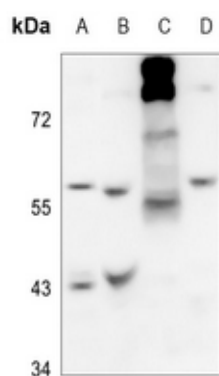
Name	ARSB
Function	Removes sulfate groups from chondroitin-4-sulfate (C4S) and regulates its degradation (PubMed: 19306108). Involved in the regulation of cell adhesion, cell migration and invasion in colonic epithelium (PubMed: 19306108). In the central nervous system, is a regulator of neurite outgrowth and neuronal plasticity, acting through the control of sulfate glycosaminoglycans and neurocan levels (By similarity).
Cellular Location	Lysosome {ECO:0000250 UniProtKB:P50429}. Cell surface {ECO:0000250 UniProtKB:P50429}

Background

KLH-conjugated synthetic peptide encompassing a sequence within the C-term region of human

Arylsulfatase B. The exact sequence is proprietary.

Images



Western blot analysis of Arylsulfatase B expression in Hela (A), mouse liver (B), mouse muscle (C), rat liver (D) whole cell lysates.

Please note: All products are 'FOR RESEARCH USE ONLY. NOT FOR USE IN DIAGNOSTIC OR THERAPEUTIC PROCEDURES'.