

Anti-BAP31 Antibody

Rabbit polyclonal antibody to BAP31

Catalog # AP60230

Product Information

Application	WB
Primary Accession	P51572
Other Accession	Q61335
Reactivity	Human, Mouse, Rat
Host	Rabbit
Clonality	Polyclonal
Calculated MW	27992

Additional Information

Gene ID	10134
Other Names	BAP31; DXS1357E; B-cell receptor-associated protein 31; BCR-associated protein 31; Bap31; 6C6-AG tumor-associated antigen; Protein CDM; p28
Target/Specificity	Recognizes endogenous levels of BAP31 protein.
Dilution	WB~~WB (1/500 - 1/1000)
Format	Liquid in 0.42% Potassium phosphate, 0.87% Sodium chloride, pH 7.3, 30% glycerol, and 0.09% (W/V) sodium azide.
Storage	Store at -20 °C.Stable for 12 months from date of receipt

Protein Information

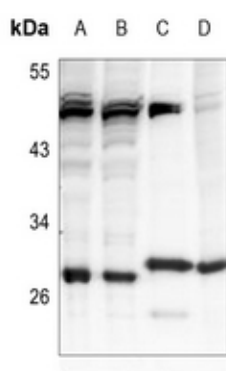
Name	BCAP31 (HGNC:16695)
Function	Functions as a chaperone protein (PubMed: 18287538 , PubMed: 9396746). Is one of the most abundant endoplasmic reticulum (ER) proteins (PubMed: 18287538 , PubMed: 9396746). Plays a role in the export of secreted proteins in the ER, the recognition of abnormally folded protein and their targeting to the ER associated-degradation (ERAD) (PubMed: 18287538 , PubMed: 9396746). Also serves as a cargo receptor for the export of transmembrane proteins (By similarity). Plays a role in the assembly of the mitochondrial membrane respiratory chain NADH dehydrogenase (Complex I) by stimulating the translocation of NDUFS4 and NDUFB11 from the cytosol to the mitochondria via interaction with TOMM40 (PubMed: 31206022). In response to ER stress, delocalizes from the ER-mitochondria contact sites and binds BCL2 (PubMed: 31206022). May be involved in CASP8-mediated apoptosis (PubMed: 10958671).

Cellular Location	Endoplasmic reticulum membrane; Multi-pass membrane protein Endoplasmic reticulum-Golgi intermediate compartment membrane; Multi-pass membrane protein. Note=May shuttle between the ER and the intermediate compartment/cis-Golgi complex (PubMed:9396746). Associates with the mitochondria-associated endoplasmic reticulum membrane via interaction with TOMM40 (PubMed:31206022)
Tissue Location	Ubiquitous. Highly expressed in neurons and discrete endocrine cells.

Background

KLH-conjugated synthetic peptide encompassing a sequence within the center region of human BAP31. The exact sequence is proprietary.

Images



Western blot analysis of BAP31 expression in THP1 (A), HepG2 (B), mouse lung (C), rat spleen (D) whole cell lysates.

Please note: All products are 'FOR RESEARCH USE ONLY. NOT FOR USE IN DIAGNOSTIC OR THERAPEUTIC PROCEDURES'.