

Anti-Osteocalcin Antibody

Rabbit polyclonal antibody to Osteocalcin
Catalog # AP60231

Product Information

Application	WB
Primary Accession	P02818
Other Accession	P86546
Reactivity	Human, Mouse, Rat
Host	Rabbit
Clonality	Polyclonal
Calculated MW	10963

Additional Information

Gene ID	632
Other Names	Osteocalcin; Bone Gla protein; BGP; Gamma-carboxyglutamic acid-containing protein
Target/Specificity	KLH-conjugated synthetic peptide encompassing a sequence within the center region of human Osteocalcin. The exact sequence is proprietary.
Dilution	WB~~WB (1/500 - 1/1000)
Format	Liquid in 0.42% Potassium phosphate, 0.87% Sodium chloride, pH 7.3, 30% glycerol, and 0.09% (W/V) sodium azide.
Storage	Store at -20 °C.Stable for 12 months from date of receipt

Protein Information

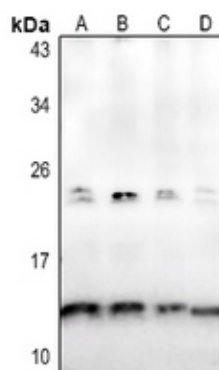
Name	BGLAP
Function	Bone protein that constitutes 1-2% of the total bone protein, and which acts as a negative regulator of bone formation (PubMed: 3019668 , PubMed: 6967872). Functions to limit bone formation without impairing bone resorption or mineralization (By similarity). It binds strongly to apatite and calcium (PubMed: 6967872).
Cellular Location	Secreted.

Background

KLH-conjugated synthetic peptide encompassing a sequence within the center region of human Osteocalcin.

The exact sequence is proprietary.

Images



Western blot analysis of Osteocalcin expression in HCT116 (A), HEK293T (B), PC12 (C), NIH3T3 (D) whole cell lysates.

Please note: All products are 'FOR RESEARCH USE ONLY. NOT FOR USE IN DIAGNOSTIC OR THERAPEUTIC PROCEDURES'.