

Anti-CD292 Antibody

Rabbit polyclonal antibody to CD292
Catalog # AP60232

Product Information

| | |
|--------------------------|-------------------------|
| Application | WB |
| Primary Accession | P36894 |
| Other Accession | P36895 |
| Reactivity | Human, Mouse, Rat, SARS |
| Host | Rabbit |
| Clonality | Polyclonal |

Additional Information

| | |
|---------------------------|--|
| Other Names | ACVRLK3; ALK3; Bone morphogenetic protein receptor type-1A; BMP type-1A receptor; BMPR-1A; Activin receptor-like kinase 3; ALK-3; Serine/threonine-protein kinase receptor R5; SKR5; CD292 |
| Target/Specificity | KLH-conjugated synthetic peptide encompassing a sequence within the N-term region of human CD292. The exact sequence is proprietary. |
| Dilution | WB--WB (1/500 - 1/1000) |
| Format | Liquid in 0.42% Potassium phosphate, 0.87% Sodium chloride, pH 7.3, 30% glycerol, and 0.09% (W/V) sodium azide. |
| Storage | Store at -20 °C. Stable for 12 months from date of receipt |

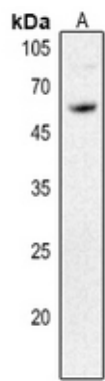
Protein Information

Background

KLH-conjugated synthetic peptide encompassing a sequence within the N-term region of human CD292. The exact sequence is proprietary.

Images

Western blot analysis of CD292 expression in rat liver (A) whole cell lysates.



Please note: All products are 'FOR RESEARCH USE ONLY. NOT FOR USE IN DIAGNOSTIC OR THERAPEUTIC PROCEDURES'.