

Anti-Caspase 2 Antibody

Rabbit polyclonal antibody to Caspase 2

Catalog # AP60235

Product Information

Application	WB, IHC
Primary Accession	P42575
Reactivity	Human, Rat
Host	Rabbit
Clonality	Polyclonal
Calculated MW	50685

Additional Information

Gene ID	835
Other Names	ICH1; NEDD2; Caspase-2; CASP-2; Neural precursor cell expressed developmentally down-regulated protein 2; NEDD-2; Protease ICH-1
Target/Specificity	Recognizes endogenous levels of Caspase 2 protein.
Dilution	WB~~WB (1/500 - 1/1000), IHC (1/100 - 1/200) IHC~~WB (1/500 - 1/1000), IHC (1/100 - 1/200)
Format	Liquid in 0.42% Potassium phosphate, 0.87% Sodium chloride, pH 7.3, 30% glycerol, and 0.09% (W/V) sodium azide.
Storage	Store at -20 °C.Stable for 12 months from date of receipt

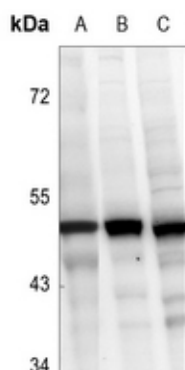
Protein Information

Name	CASP2
Synonyms	ICH1, NEDD2
Function	Is a regulator of the cascade of caspases responsible for apoptosis execution (PubMed: 11156409 , PubMed: 15073321 , PubMed: 8087842). Might function by either activating some proteins required for cell death or inactivating proteins necessary for cell survival (PubMed: 15073321). Associates with PIDD1 and CRADD to form the PIDDosome, a complex that activates CASP2 and triggers apoptosis in response to genotoxic stress (PubMed: 15073321).
Tissue Location	Expressed at higher levels in the embryonic lung, liver and kidney than in the heart and brain. In adults, higher level expression is seen in the placenta, lung, kidney, and pancreas than in the heart, brain, liver and skeletal muscle

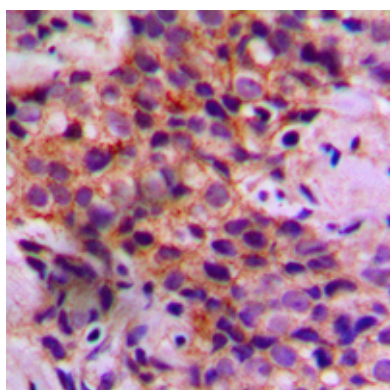
Background

KLH-conjugated synthetic peptide encompassing a sequence within the center region of human Caspase 2. The exact sequence is proprietary.

Images



Western blot analysis of Caspase 2 expression in Jurkat (A), HeLa (B), PC12 (C) whole cell lysates.



Immunohistochemical analysis of Caspase 2 staining in human breast cancer formalin fixed paraffin embedded tissue section. The section was pre-treated using heat mediated antigen retrieval with sodium citrate buffer (pH 6.0). The section was then incubated with the antibody at room temperature and detected using an HRP conjugated compact polymer system. DAB was used as the chromogen. The section was then counterstained with haematoxylin and mounted with DPX.

Please note: All products are 'FOR RESEARCH USE ONLY. NOT FOR USE IN DIAGNOSTIC OR THERAPEUTIC PROCEDURES'.