

# Anti-CCL7 Antibody

Rabbit polyclonal antibody to CCL7  
Catalog # AP60237

## Product Information

---

<b>Application</b>	WB
<b>Primary Accession</b>	<a href="#">P80098</a>
<b>Reactivity</b>	Human, Monkey
<b>Host</b>	Rabbit
<b>Clonality</b>	Polyclonal
<b>Calculated MW</b>	11200

## Additional Information

---

<b>Gene ID</b>	6354
<b>Other Names</b>	MCP3; SCYA6; SCYA7; C-C motif chemokine 7; Monocyte chemoattractant protein 3; Monocyte chemotactic protein 3; MCP-3; NC28; Small-inducible cytokine A7
<b>Target/Specificity</b>	KLH-conjugated synthetic peptide encompassing a sequence within the C-term region of human CCL7. The exact sequence is proprietary.
<b>Dilution</b>	WB~~WB (1/500 - 1/1000)
<b>Format</b>	Liquid in 0.42% Potassium phosphate, 0.87% Sodium chloride, pH 7.3, 30% glycerol, and 0.09% (W/V) sodium azide.
<b>Storage</b>	Store at -20 °C. Stable for 12 months from date of receipt

## Protein Information

---

<b>Name</b>	CCL7
<b>Synonyms</b>	MCP3, SCYA6, SCYA7
<b>Function</b>	Chemotactic factor that plays an important role in immune regulation. Attracts monocytes, eosinophils, basophils, and T-cells to sites of inflammation or infection. Upon binding to various chemokine receptors including CCR1, CCR2, CCR3, and CCR5, facilitates immune cell migration by guiding them to infected tissues (PubMed: <a href="#">9364936</a> , PubMed: <a href="#">10477718</a> ). Interacts with CCR2 to facilitate the release of monocytes from the bone marrow into the bloodstream, maintaining monocyte homeostasis. In turn, monocytes recruited to inflamed or injured tissues can differentiate into macrophages or dendritic cells, which are essential for immune defense and tissue repair. Through CCR1, contributes to macrophage polarization via NF-kappa-B activation which leads to the release of inflammatory factors

(PubMed:[38417634](#)). In the trigeminal ganglion neurons, activates ERK via CCR2 and CCR3 to enhance neuronal excitability, which contributes to the maintenance of trigeminal neuropathic pain. Additionally, modulates the early immune response in the skin, preventing pathogen dissemination while maintaining cutaneous immune control.

**Cellular Location** Secreted.

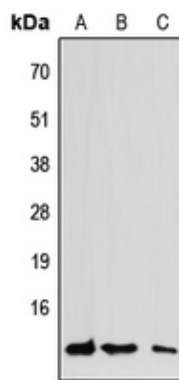
## Background

---

KLH-conjugated synthetic peptide encompassing a sequence within the C-term region of human CCL7. The exact sequence is proprietary.

## Images

---



Western blot analysis of CCL7 expression in H1792 (A), LOVO (B), U2OS (C) whole cell lysates.

Please note: All products are 'FOR RESEARCH USE ONLY. NOT FOR USE IN DIAGNOSTIC OR THERAPEUTIC PROCEDURES'.