

Anti-CCR4 Antibody

Rabbit polyclonal antibody to CCR4
Catalog # AP60238

Product Information

Application	WB
Primary Accession	P51679
Other Accession	P51680
Reactivity	Human, Mouse, Drosophila
Host	Rabbit
Clonality	Polyclonal
Calculated MW	41403

Additional Information

Gene ID	1233
Other Names	CMKBR4; C-C chemokine receptor type 4; C-C CKR-4; CC-CKR-4; CCR-4; CCR4; K5-5; CD194
Target/Specificity	Recognizes endogenous levels of CCR4 protein.
Dilution	WB~~WB (1/500 - 1/1000)
Format	Liquid in 0.42% Potassium phosphate, 0.87% Sodium chloride, pH 7.3, 30% glycerol, and 0.09% (W/V) sodium azide.
Storage	Store at -20 °C.Stable for 12 months from date of receipt

Protein Information

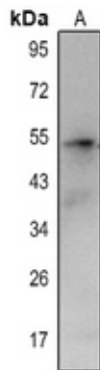
Name	CCR4
Synonyms	CMKBR4
Function	High affinity receptor for the C-C type chemokines CCL17/TARC, CCL22/MDC and CKLF isoform 1/CKLF1. The activity of this receptor is mediated by G(i) proteins which activate a phosphatidylinositol-calcium second messenger system. Can function as a chemoattractant homing receptor on circulating memory lymphocytes and as a coreceptor for some primary HIV-2 isolates. In the CNS, could mediate hippocampal-neuron survival.
Cellular Location	Cell membrane; Multi-pass membrane protein.
Tissue Location	Predominantly expressed in the thymus, in peripheral blood leukocytes, including T-cells, mostly CD4+ cells, and basophils, and in platelets; at lower levels, in the spleen and in monocytes (PubMed:10754297, PubMed:9169480).

Detected also in macrophages, IL-2-activated natural killer cells and skin-homing memory T-cells, mostly the ones expressing the cutaneous lymphocyte antigen (CLA). Expressed in brain microvascular and coronary artery endothelial cells (PubMed:10754297).

Background

KLH-conjugated synthetic peptide encompassing a sequence within the N-term region of human CCR4. The exact sequence is proprietary.

Images



Western blot analysis of CCR4 expression in H446 (A) whole cell lysates.

Please note: All products are 'FOR RESEARCH USE ONLY. NOT FOR USE IN DIAGNOSTIC OR THERAPEUTIC PROCEDURES'.