

Anti-Cadherin 19 Antibody

Rabbit polyclonal antibody to Cadherin 19

Catalog # AP60244

Product Information

Application	WB, IF/IC, IHC
Primary Accession	Q9H159
Reactivity	Human, Mouse, Rat, Monkey
Host	Rabbit
Clonality	Polyclonal
Calculated MW	87002

Additional Information

Gene ID	28513
Other Names	CDH7L2; Cadherin-19
Target/Specificity	KLH-conjugated synthetic peptide encompassing a sequence within the center region of human Cadherin 19. The exact sequence is proprietary.
Dilution	WB~~WB (1/500 - 1/1000), IHC (1/100 - 1/200), IF/IC (1/100 - 1/500) IF/IC~~N/A IHC~~WB (1/500 - 1/1000), IHC (1/100 - 1/200), IF/IC (1/100 - 1/500)
Format	Liquid in 0.42% Potassium phosphate, 0.87% Sodium chloride, pH 7.3, 30% glycerol, and 0.09% (W/V) sodium azide.
Storage	Store at -20 °C.Stable for 12 months from date of receipt

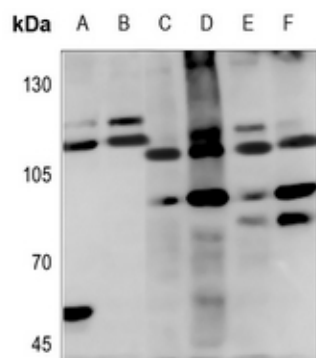
Protein Information

Name	CDH19
Synonyms	CDH7L2
Function	Cadherins are calcium-dependent cell adhesion proteins. They preferentially interact with themselves in a homophilic manner in connecting cells; cadherins may thus contribute to the sorting of heterogeneous cell types.
Cellular Location	Cell membrane; Single-pass type I membrane protein
Tissue Location	Expressed in many tissues, with the exception of uterus

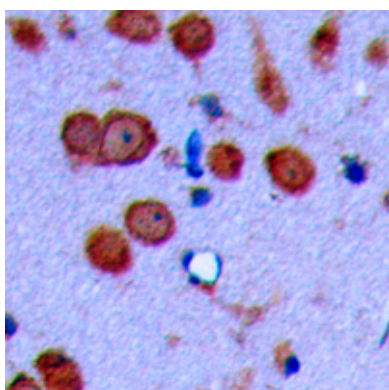
Background

KLH-conjugated synthetic peptide encompassing a sequence within the center region of human Cadherin 19. The exact sequence is proprietary.

Images



Western blot analysis of Cadherin 19 expression in HEK293T (A), A549 (B), mouse spleen (C), mouse heart (D), rat spleen (E), rat heart (F) whole cell lysates.



Immunohistochemical analysis of Cadherin 19 staining in human brain formalin fixed paraffin embedded tissue section. The section was pre-treated using heat mediated antigen retrieval with sodium citrate buffer (pH 6.0). The section was then incubated with the antibody at room temperature and detected using an HRP conjugated compact polymer system. DAB was used as the chromogen. The section was then counterstained with haematoxylin and mounted with DPX.

Please note: All products are 'FOR RESEARCH USE ONLY. NOT FOR USE IN DIAGNOSTIC OR THERAPEUTIC PROCEDURES'.