

# Anti-CHRM1 Antibody

Rabbit polyclonal antibody to CHRM1

Catalog # AP60251

## Product Information

---

<b>Application</b>	WB
<b>Primary Accession</b>	<a href="#">P11229</a>
<b>Other Accession</b>	<a href="#">P12657</a>
<b>Reactivity</b>	Human, Mouse, Rat, Monkey
<b>Host</b>	Rabbit
<b>Clonality</b>	Polyclonal
<b>Calculated MW</b>	51421

## Additional Information

---

<b>Gene ID</b>	1128
<b>Other Names</b>	Muscarinic acetylcholine receptor M1
<b>Target/Specificity</b>	KLH-conjugated synthetic peptide encompassing a sequence within the center region of human CHRM1. The exact sequence is proprietary.
<b>Dilution</b>	WB~~WB (1/500 - 1/1000)
<b>Format</b>	Liquid in 0.42% Potassium phosphate, 0.87% Sodium chloride, pH 7.3, 30% glycerol, and 0.09% (W/V) sodium azide.
<b>Storage</b>	Store at -20 °C.Stable for 12 months from date of receipt

## Protein Information

---

<b>Name</b>	CHRM1
<b>Function</b>	The muscarinic acetylcholine receptor mediates various cellular responses, including inhibition of adenylate cyclase, breakdown of phosphoinositides and modulation of potassium channels through the action of G proteins. Primary transducing effect is Pi turnover.
<b>Cellular Location</b>	Cell membrane; Multi-pass membrane protein. Postsynaptic cell membrane; Multi-pass membrane protein

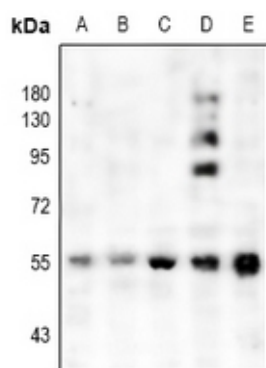
## Background

---

KLH-conjugated synthetic peptide encompassing a sequence within the center region of human CHRM1. The exact sequence is proprietary.

## Images

---



Western blot analysis of CHRM1 expression in HEK293T (A), mouse brain (B), rat brain (C), LOVO (D), MCF7 (E) whole cell lysates.

Please note: All products are 'FOR RESEARCH USE ONLY. NOT FOR USE IN DIAGNOSTIC OR THERAPEUTIC PROCEDURES'.