

# Anti-Calponin 2 Antibody

Rabbit polyclonal antibody to Calponin 2

Catalog # AP60255

## Product Information

---

<b>Application</b>	WB, IF/IC
<b>Primary Accession</b>	<a href="#">Q99439</a>
<b>Other Accession</b>	<a href="#">Q08093</a>
<b>Reactivity</b>	Human, Mouse, Rat, Bovine
<b>Host</b>	Rabbit
<b>Clonality</b>	Polyclonal
<b>Calculated MW</b>	33697

## Additional Information

---

<b>Gene ID</b>	1265
<b>Other Names</b>	Calponin-2; Calponin H2, smooth muscle; Neutral calponin
<b>Target/Specificity</b>	Recognizes endogenous levels of Calponin 2 protein.
<b>Dilution</b>	WB~~WB (1/500 - 1/1000), IF/IC (1/100 - 1/500) IF/IC~~N/A
<b>Format</b>	Liquid in 0.42% Potassium phosphate, 0.87% Sodium chloride, pH 7.3, 30% glycerol, and 0.09% (W/V) sodium azide.
<b>Storage</b>	Store at -20 °C.Stable for 12 months from date of receipt

## Protein Information

---

<b>Name</b>	CNN2
<b>Function</b>	Thin filament-associated protein that is implicated in the regulation and modulation of smooth muscle contraction. It is capable of binding to actin, calmodulin and tropomyosin. The interaction of calponin with actin inhibits the actomyosin Mg-ATPase activity.
<b>Tissue Location</b>	Heart and smooth muscle.

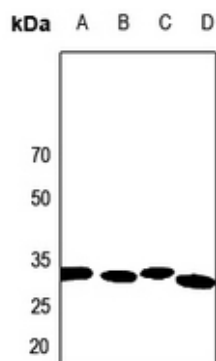
## Background

---

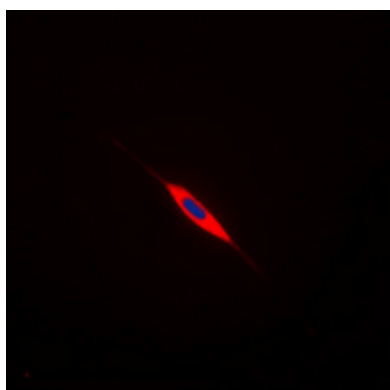
KLH-conjugated synthetic peptide encompassing a sequence within the center region of human Calponin 2. The exact sequence is proprietary.

## Images

---



Western blot analysis of Calponin 2 expression in HeLa (A), mouse muscle (B), rat heart (C), rat muscle (D) whole cell lysates.



Immunofluorescent analysis of Calponin 2 staining in HeLa cells. Formalin-fixed cells were permeabilized with 0.1% Triton X-100 in TBS for 5-10 minutes and blocked with 3% BSA-PBS for 30 minutes at room temperature. Cells were probed with the primary antibody in 3% BSA-PBS and incubated overnight at 4 °C in a humidified chamber. Cells were washed with PBST and incubated with a DyLight 594-conjugated secondary antibody (red) in PBS at room temperature in the dark. DAPI was used to stain the cell nuclei (blue).

Please note: All products are 'FOR RESEARCH USE ONLY. NOT FOR USE IN DIAGNOSTIC OR THERAPEUTIC PROCEDURES'.