

# Anti-G-CSF Antibody

Rabbit polyclonal antibody to G-CSF  
Catalog # AP60257

## Product Information

---

<b>Application</b>	WB
<b>Primary Accession</b>	<a href="#">P09919</a>
<b>Other Accession</b>	<a href="#">P09920</a>
<b>Reactivity</b>	Human, Mouse, Rat
<b>Host</b>	Rabbit
<b>Clonality</b>	Polyclonal
<b>Calculated MW</b>	22293

## Additional Information

---

<b>Gene ID</b>	1440
<b>Other Names</b>	C17orf33; GCSF; Granulocyte colony-stimulating factor; G-CSF; Pluripoietin; Filgrastim; Lenograstim
<b>Target/Specificity</b>	Recognizes endogenous levels of G-CSF protein.
<b>Dilution</b>	WB~~WB (1/500 - 1/1000)
<b>Format</b>	Liquid in 0.42% Potassium phosphate, 0.87% Sodium chloride, pH 7.3, 30% glycerol, and 0.09% (W/V) sodium azide.
<b>Storage</b>	Store at -20 °C.Stable for 12 months from date of receipt

## Protein Information

---

<b>Name</b>	CSF3
<b>Synonyms</b>	C17orf33, GCSF
<b>Function</b>	Granulocyte/macrophage colony-stimulating factors are cytokines that act in hematopoiesis by controlling the production, differentiation, and function of 2 related white cell populations of the blood, the granulocytes and the monocytes-macrophages. This CSF induces granulocytes.
<b>Cellular Location</b>	Secreted.

## Background

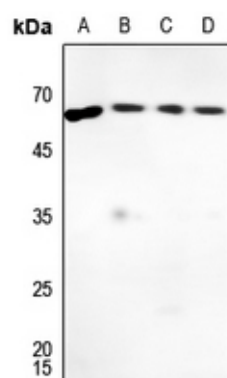
---

KLH-conjugated synthetic peptide encompassing a sequence within the center region of human G-CSF. The

exact sequence is proprietary.

## Images

---



Western blot analysis of G-CSF expression in Hela (A), mouse lung (B), mouse muscle (C), rat lung (D) whole cell lysates.

Please note: All products are 'FOR RESEARCH USE ONLY. NOT FOR USE IN DIAGNOSTIC OR THERAPEUTIC PROCEDURES'.