

# Anti-Cystatin C Antibody

Rabbit polyclonal antibody to Cystatin C  
Catalog # AP60258

## Product Information

---

Application	WB
Primary Accession	<a href="#">P01034</a>
Other Accession	<a href="#">P21460</a>
Reactivity	Human, Mouse
Host	Rabbit
Clonality	Polyclonal
Calculated MW	15799

## Additional Information

---

Gene ID	1471
Other Names	Cystatin-C; Cystatin-3; Gamma-trace; Neuroendocrine basic polypeptide; Post-gamma-globulin
Target/Specificity	KLH-conjugated synthetic peptide encompassing a sequence within the center region of human Cystatin C. The exact sequence is proprietary.
Dilution	WB~~WB (1/500 - 1/1000)
Format	Liquid in 0.42% Potassium phosphate, 0.87% Sodium chloride, pH 7.3, 30% glycerol, and 0.09% (W/V) sodium azide.
Storage	Store at -20 °C.Stable for 12 months from date of receipt

## Protein Information

---

Name	CST3
Function	As an inhibitor of cysteine proteinases, this protein is thought to serve an important physiological role as a local regulator of this enzyme activity.
Cellular Location	Secreted.
Tissue Location	Expressed in submandibular and sublingual saliva but not in parotid saliva (at protein level). Expressed in various body fluids, such as the cerebrospinal fluid and plasma. Expressed in highest levels in the epididymis, vas deferens, brain, thymus, and ovary and the lowest in the submandibular gland

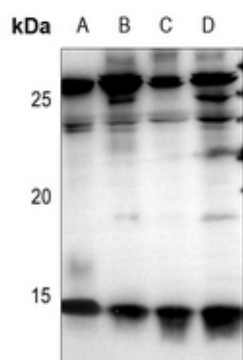
## Background

---

KLH-conjugated synthetic peptide encompassing a sequence within the center region of human Cystatin C. The exact sequence is proprietary.

## Images

---



Western blot analysis of Cystatin C expression in mouse brain (A), HepG2 (B), PC3 (C), A2780 (D) whole cell lysates.

Please note: All products are 'FOR RESEARCH USE ONLY. NOT FOR USE IN DIAGNOSTIC OR THERAPEUTIC PROCEDURES'.