

Anti-Cathepsin Z Antibody

Rabbit polyclonal antibody to Cathepsin Z
Catalog # AP60260

Product Information

Application	WB, IHC
Primary Accession	Q9UBR2
Reactivity	Human, Rat
Host	Rabbit
Clonality	Polyclonal
Calculated MW	33868

Additional Information

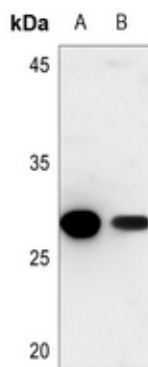
Gene ID	1522
Other Names	Cathepsin Z; Cathepsin P; Cathepsin X
Target/Specificity	Recognizes endogenous levels of Cathepsin Z protein.
Dilution	WB~~WB (1/500 - 1/1000), IHC (1/100 - 1/200) IHC~~WB (1/500 - 1/1000), IHC (1/100 - 1/200)
Format	Liquid in 0.42% Potassium phosphate, 0.87% Sodium chloride, pH 7.3, 30% glycerol, and 0.09% (W/V) sodium azide.
Storage	Store at -20 °C.Stable for 12 months from date of receipt

Protein Information

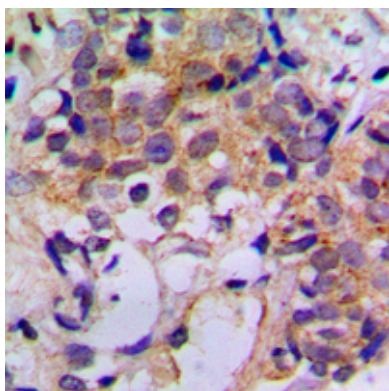
Name	CTSZ
Function	Exhibits carboxy-monopeptidase as well as carboxy-dipeptidase activity (PubMed: 10504234). Capable of producing kinin potentiating peptides (By similarity).
Cellular Location	Lysosome.
Tissue Location	Widely expressed..

Background

KLH-conjugated synthetic peptide encompassing a sequence within the center region of human Cathepsin Z. The exact sequence is proprietary.



Western blot analysis of Cathepsin Z expression in rat liver (A), rat kidney (B) whole cell lysates.



Immunohistochemical analysis of Cathepsin Z staining in human breast cancer formalin fixed paraffin embedded tissue section. The section was pre-treated using heat mediated antigen retrieval with sodium citrate buffer (pH 6.0). The section was then incubated with the antibody at room temperature and detected using an HRP conjugated compact polymer system. DAB was used as the chromogen. The section was then counterstained with haematoxylin and mounted with DPX.

Please note: All products are 'FOR RESEARCH USE ONLY. NOT FOR USE IN DIAGNOSTIC OR THERAPEUTIC PROCEDURES'.