

Anti-DBI Antibody

Rabbit polyclonal antibody to DBI
Catalog # AP60262

Product Information

Application	WB
Primary Accession	P07108
Other Accession	P31786
Reactivity	Human, Mouse, Rat, Pig
Host	Rabbit
Clonality	Polyclonal
Calculated MW	10044

Additional Information

Gene ID	1622
Other Names	Acyl-CoA-binding protein; ACBP; Diazepam-binding inhibitor; DBI; Endozepine; EP
Target/Specificity	Recognizes endogenous levels of DBI protein.
Dilution	WB~~WB (1/500 - 1/1000)
Format	Liquid in 0.42% Potassium phosphate, 0.87% Sodium chloride, pH 7.3, 30% glycerol, and 0.09% (W/V) sodium azide.
Storage	Store at -20 °C.Stable for 12 months from date of receipt

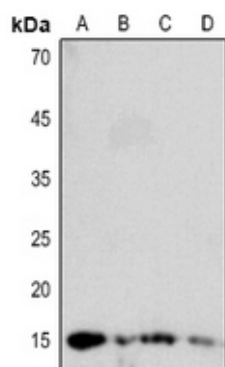
Protein Information

Name	DBI
Function	Binds medium- and long-chain acyl-CoA esters with very high affinity and may function as an intracellular carrier of acyl-CoA esters. It is also able to displace diazepam from the benzodiazepine (BZD) recognition site located on the GABA type A receptor. It is therefore possible that this protein also acts as a neuropeptide to modulate the action of the GABA receptor.
Cellular Location	Endoplasmic reticulum. Golgi apparatus Note=Golgi localization is dependent on ligand binding (PubMed:17953517).
Tissue Location	Isoform 1 is ubiquitous, with a moderate expression level. Isoform 2 is ubiquitous with high level in liver and adipose tissue. Isoform 3 is ubiquitous with strong expression in adipose tissue and heart.

Background

KLH-conjugated synthetic peptide encompassing a sequence within the C-term region of human DBI. The exact sequence is proprietary.

Images



Western blot analysis of DBI expression in mouse liver (A), mouse kidney (B), mouse lung (C), rat liver (D) whole cell lysates.

Please note: All products are 'FOR RESEARCH USE ONLY. NOT FOR USE IN DIAGNOSTIC OR THERAPEUTIC PROCEDURES'.