

Anti-MEN Antibody

Rabbit polyclonal antibody to MEN

Catalog # AP60277

Product Information

Application	WB, IHC
Primary Accession	P55199
Other Accession	O08856
Reactivity	Human, Mouse, Rat
Host	Rabbit
Clonality	Polyclonal
Calculated MW	68265

Additional Information

Gene ID	8178
Other Names	C19orf17; RNA polymerase II elongation factor ELL; Eleven-nineteen lysine-rich leukemia protein
Target/Specificity	KLH-conjugated synthetic peptide encompassing a sequence within the center region of human MEN. The exact sequence is proprietary.
Dilution	WB~~WB (1/500 - 1/1000), IHC (1/100 - 1/200) IHC~~WB (1/500 - 1/1000), IHC (1/100 - 1/200)
Format	Liquid in 0.42% Potassium phosphate, 0.87% Sodium chloride, pH 7.3, 30% glycerol, and 0.09% (W/V) sodium azide.
Storage	Store at -20 °C.Stable for 12 months from date of receipt

Protein Information

Name	ELL
Synonyms	C19orf17
Function	Elongation factor component of the super elongation complex (SEC), a complex required to increase the catalytic rate of RNA polymerase II transcription by suppressing transient pausing by the polymerase at multiple sites along the DNA. Elongation factor component of the little elongation complex (LEC), a complex required to regulate small nuclear RNA (snRNA) gene transcription by RNA polymerase II and III (PubMed: 22195968 , PubMed: 23932780). Specifically required for stimulating the elongation step of RNA polymerase II- and III-dependent snRNA gene transcription (PubMed: 23932780). ELL also plays an early role before its assembly into in the SEC complex by stabilizing RNA polymerase II recruitment/initiation and

entry into the pause site. Required to stabilize the pre-initiation complex and early elongation.

Cellular Location

Nucleus. Nucleus speckle. Nucleus, Cajal body. Note=Colocalizes with EAF2 to nuclear speckles (PubMed:12446457). Colocalizes with coilin in subnuclear cajal and histone locus bodies (PubMed:12686606). Translocates in the LEC complex to cajal and histone locus bodies at snRNA genes in a ICE1-dependent manner. Associates to transcriptionally active chromatin at snRNA genes (PubMed:23932780).

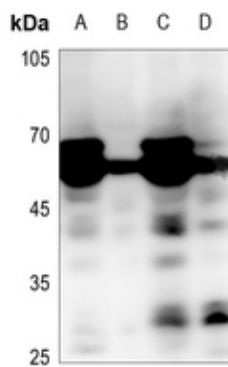
Tissue Location

Expressed in all tissues tested. Highest levels found in placenta, skeletal muscle, testis and peripheral blood leukocytes

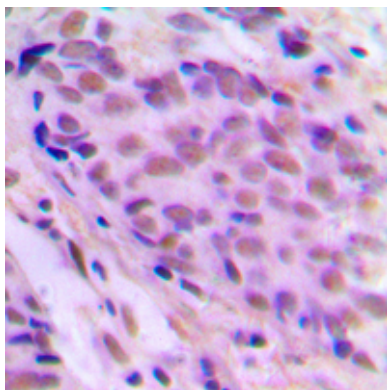
Background

KLH-conjugated synthetic peptide encompassing a sequence within the center region of human MEN. The exact sequence is proprietary.

Images



Western blot analysis of MEN expression in mouse lung (A), mouse testis (B), rat lung (C), rat testis (D) whole cell lysates.



Immunohistochemical analysis of MEN staining in human breast cancer formalin fixed paraffin embedded tissue section. The section was pre-treated using heat mediated antigen retrieval with sodium citrate buffer (pH 6.0). The section was then incubated with the antibody at room temperature and detected using an HRP conjugated compact polymer system. DAB was used as the chromogen. The section was then counterstained with haematoxylin and mounted with DPX.

Please note: All products are 'FOR RESEARCH USE ONLY. NOT FOR USE IN DIAGNOSTIC OR THERAPEUTIC PROCEDURES'.