

Anti-Estrogen Receptor beta Antibody

Rabbit polyclonal antibody to Estrogen Receptor beta

Catalog # AP60282

Product Information

Application	WB, IF/IC
Primary Accession	Q92731
Other Accession	O08537
Reactivity	Human, Mouse, Rat, Drosophila
Host	Rabbit
Clonality	Polyclonal
Calculated MW	59216

Additional Information

Gene ID	2100
Other Names	ESTRB; NR3A2; Estrogen receptor beta; ER-beta; Nuclear receptor subfamily 3 group A member 2
Target/Specificity	KLH-conjugated synthetic peptide encompassing a sequence within the center region of human Estrogen Receptor beta. The exact sequence is proprietary.
Dilution	WB~~WB (1/500 - 1/1000), IF/IC (1/100 - 1/500) IF/IC~~N/A
Format	Liquid in 0.42% Potassium phosphate, 0.87% Sodium chloride, pH 7.3, 30% glycerol, and 0.09% (W/V) sodium azide.
Storage	Store at -20 °C.Stable for 12 months from date of receipt

Protein Information

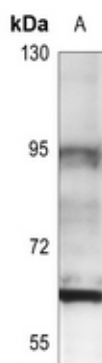
Name	ESR2
Synonyms	ESTRB, NR3A2
Function	Nuclear hormone receptor. Binds estrogens with an affinity similar to that of ESR1/ER-alpha, and activates expression of reporter genes containing estrogen response elements (ERE) in an estrogen- dependent manner (PubMed: 20074560).
Cellular Location	Nucleus {ECO:0000255 PROSITE-ProRule:PRU00407, ECO:0000269 PubMed:19126643, ECO:0000269 PubMed:20074560}
Tissue Location	[Isoform 1]: Expressed in testis and ovary, and at a lower level in heart, brain, placenta, liver, skeletal muscle, spleen, thymus, prostate, colon, bone marrow, mammary gland and uterus Also found in uterine bone, breast, and ovarian

tumor cell lines, but not in colon and liver tumors. [Isoform 4]: Expressed in the testis. [Isoform 6]: Expressed in testis, placenta, skeletal muscle, spleen and leukocytes, and at a lower level in heart, lung, liver, kidney, pancreas, thymus, prostate, colon, small intestine, bone marrow, mammary gland and uterus. Not expressed in brain.

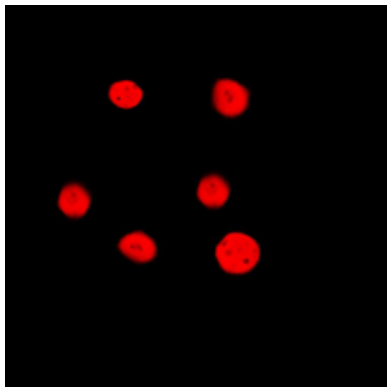
Background

KLH-conjugated synthetic peptide encompassing a sequence within the center region of human Estrogen Receptor beta. The exact sequence is proprietary.

Images



Western blot analysis of Estrogen Receptor beta expression in U87MG (A) whole cell lysates.



Immunofluorescent analysis of Estrogen Receptor beta staining in HeLa cells. Formalin-fixed cells were permeabilized with 0.1% Triton X-100 in TBS for 5-10 minutes and blocked with 3% BSA-PBS for 30 minutes at room temperature. Cells were probed with the primary antibody in 3% BSA-PBS and incubated overnight at 4 °C in a humidified chamber. Cells were washed with PBST and incubated with a DyLight 594-conjugated secondary antibody (red) in PBS at room temperature in the dark.

Please note: All products are 'FOR RESEARCH USE ONLY. NOT FOR USE IN DIAGNOSTIC OR THERAPEUTIC PROCEDURES'.