

# Anti-CD142 (pS290) Antibody

Rabbit polyclonal antibody to CD142 (pS290)

Catalog # AP60283

## Product Information

---

<b>Application</b>	WB
<b>Primary Accession</b>	<a href="#">P13726</a>
<b>Reactivity</b>	Human, Mouse, Rat
<b>Host</b>	Rabbit
<b>Clonality</b>	Polyclonal
<b>Calculated MW</b>	33068

## Additional Information

---

<b>Gene ID</b>	2152
<b>Other Names</b>	Tissue factor; TF; Coagulation factor III; Thromboplastin; CD142
<b>Target/Specificity</b>	Recognizes endogenous levels of CD142 (pS290) protein.
<b>Dilution</b>	WB~~WB (1/500 - 1/1000)
<b>Format</b>	Liquid in 0.42% Potassium phosphate, 0.87% Sodium chloride, pH 7.3, 30% glycerol, and 0.09% (W/V) sodium azide.
<b>Storage</b>	Store at -20 °C.Stable for 12 months from date of receipt

## Protein Information

---

<b>Name</b>	F3
<b>Function</b>	Initiates blood coagulation by forming a complex with circulating factor VII or VIIa. The [TF:VIIa] complex activates factors IX or X by specific limited proteolysis. TF plays a role in normal hemostasis by initiating the cell-surface assembly and propagation of the coagulation protease cascade.
<b>Cellular Location</b>	[Isoform 1]: Membrane; Single-pass type I membrane protein
<b>Tissue Location</b>	Lung, placenta and pancreas.

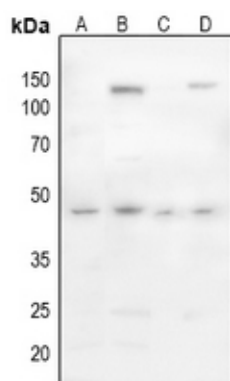
## Background

---

KLH-conjugated synthetic peptide encompassing a sequence within the C-term region of human CD142 (pS290). The exact sequence is proprietary.

## Images

---



Western blot analysis of CD142 (pS290) expression in mouse brain (A), mouse lung (B), mouse liver (C), rat liver (D) whole cell lysates.

Please note: All products are 'FOR RESEARCH USE ONLY. NOT FOR USE IN DIAGNOSTIC OR THERAPEUTIC PROCEDURES'.