

# Anti-FGF23 Antibody

Rabbit polyclonal antibody to FGF23  
Catalog # AP60285

## Product Information

---

Application	WB
Primary Accession	<a href="#">Q9GZV9</a>
Other Accession	<a href="#">Q9EPC2</a>
Reactivity	Human, Mouse, Rat
Host	Rabbit
Clonality	Polyclonal
Calculated MW	27954

## Additional Information

---

Gene ID	8074
Other Names	HYPF; Fibroblast growth factor 23; FGF-23; Phosphatonin; Tumor-derived hypophosphatemia-inducing factor
Target/Specificity	Recognizes endogenous levels of FGF23 protein.
Dilution	WB~~WB (1/500 - 1/1000)
Format	Liquid in 0.42% Potassium phosphate, 0.87% Sodium chloride, pH 7.3, 30% glycerol, and 0.09% (W/V) sodium azide.
Storage	Store at -20 °C.Stable for 12 months from date of receipt

## Protein Information

---

Name	FGF23
Synonyms	HYPF
Function	Regulator of phosphate homeostasis (PubMed: <a href="#">11062477</a> ). Inhibits renal tubular phosphate transport by reducing SLC34A1 levels (PubMed: <a href="#">11409890</a> ). Up-regulates EGR1 expression in the presence of KL (By similarity). Acts directly on the parathyroid to decrease PTH secretion (By similarity). Regulator of vitamin-D metabolism (PubMed: <a href="#">15040831</a> ). Negatively regulates osteoblast differentiation and matrix mineralization (PubMed: <a href="#">18282132</a> ).
Cellular Location	Secreted. Note=Secretion is dependent on O-glycosylation
Tissue Location	Expressed in osteogenic cells particularly during phases of active bone remodeling. In adult trabecular bone, expressed in osteocytes and flattened bone-lining cells (inactive osteoblasts)

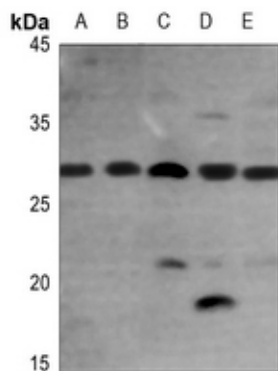
## Background

---

KLH-conjugated synthetic peptide encompassing a sequence within the C-term region of human FGF23. The exact sequence is proprietary.

## Images

---



Western blot analysis of FGF23 expression in A549 (A), U2OS (B), mouse liver (C), mouse heart (D), rat liver (E) whole cell lysates.

Please note: All products are 'FOR RESEARCH USE ONLY. NOT FOR USE IN DIAGNOSTIC OR THERAPEUTIC PROCEDURES'.