

# Anti-GAB1 (pY627) Antibody

Rabbit polyclonal antibody to GAB1 (pY627)

Catalog # AP60288

## Product Information

---

<b>Application</b>	WB, IF/IC
<b>Primary Accession</b>	<a href="#">Q13480</a>
<b>Other Accession</b>	<a href="#">Q9QYY0</a>
<b>Reactivity</b>	Human, Mouse, Rat, Bovine
<b>Host</b>	Rabbit
<b>Clonality</b>	Polyclonal
<b>Calculated MW</b>	76616

## Additional Information

---

<b>Gene ID</b>	2549
<b>Other Names</b>	GRB2-associated-binding protein 1; GRB2-associated binder 1; Growth factor receptor bound protein 2-associated protein 1
<b>Target/Specificity</b>	Recognizes endogenous levels of GAB1 (pY627) protein.
<b>Dilution</b>	WB~~WB (1/500 - 1/1000), IF/IC (1/100 - 1/500) IF/IC~~N/A
<b>Format</b>	Liquid in 0.42% Potassium phosphate, 0.87% Sodium chloride, pH 7.3, 30% glycerol, and 0.09% (W/V) sodium azide.
<b>Storage</b>	Store at -20 °C.Stable for 12 months from date of receipt

## Protein Information

---

<b>Name</b>	GAB1
<b>Function</b>	Adapter protein that plays a role in intracellular signaling cascades triggered by activated receptor-type kinases. Plays a role in FGFR1 signaling. Probably involved in signaling by the epidermal growth factor receptor (EGFR) and the insulin receptor (INSR). Involved in the MET/HGF-signaling pathway (PubMed: <a href="#">29408807</a> ).

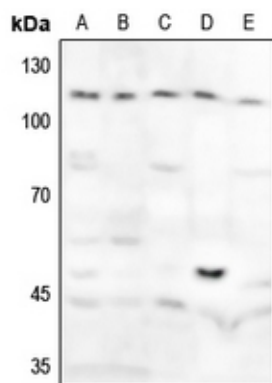
## Background

---

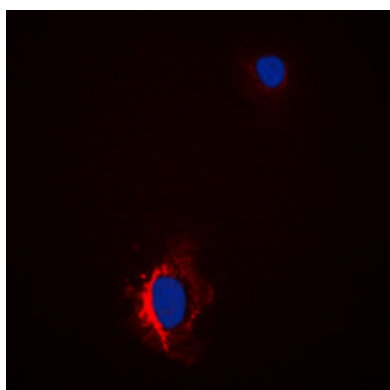
KLH-conjugated synthetic peptide encompassing a sequence within the C-term region of human GAB1 (pY627). The exact sequence is proprietary.

## Images

---



Western blot analysis of GAB1 (pY627) expression in HeLa (A), U2OS (B), mouse lung (C), mouse testis (D), rat lung (E) whole cell lysates.



Immunofluorescent analysis of GAB1 (pY627) staining in HeLa cells. Formalin-fixed cells were permeabilized with 0.1% Triton X-100 in TBS for 5-10 minutes and blocked with 3% BSA-PBS for 30 minutes at room temperature. Cells were probed with the primary antibody in 3% BSA-PBS and incubated overnight at 4 °C in a humidified chamber. Cells were washed with PBST and incubated with a DyLight 594-conjugated secondary antibody (red) in PBS at room temperature in the dark. DAPI was used to stain the cell nuclei (blue).

Please note: All products are 'FOR RESEARCH USE ONLY. NOT FOR USE IN DIAGNOSTIC OR THERAPEUTIC PROCEDURES'.