

Anti-GATA3 (pS308) Antibody

Rabbit polyclonal antibody to GATA3 (pS308)

Catalog # AP60291

Product Information

Application	WB, IF/IC
Primary Accession	P23771
Other Accession	P23772
Reactivity	Human, Mouse, Zebrafish, Pig, Chicken, Bovine
Host	Rabbit
Clonality	Polyclonal
Calculated MW	47916

Additional Information

Gene ID	2625
Other Names	Trans-acting T-cell-specific transcription factor GATA-3; GATA-binding factor 3
Target/Specificity	Recognizes endogenous levels of GATA3 (pS308) protein.
Dilution	WB~~WB (1/500 - 1/1000), IF/IC (1/100 - 1/500) IF/IC~~N/A
Format	Liquid in 0.42% Potassium phosphate, 0.87% Sodium chloride, pH 7.3, 30% glycerol, and 0.09% (W/V) sodium azide.
Storage	Store at -20 °C.Stable for 12 months from date of receipt

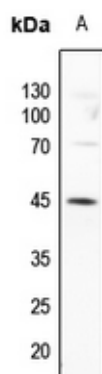
Protein Information

Name	GATA3
Function	Transcriptional activator which binds to the enhancer of the T-cell receptor alpha and delta genes. Binds to the consensus sequence 5'-AGATAG-3'. Required for the T-helper 2 (Th2) differentiation process following immune and inflammatory responses. Positively regulates ASB2 expression (By similarity). Coordinates macrophage transcriptional activation and UCP2-dependent metabolic reprogramming in response to IL33. Upon tissue injury, acts downstream of IL33 signaling to drive differentiation of inflammation-resolving alternatively activated macrophages.
Cellular Location	Nucleus.
Tissue Location	T-cells and endothelial cells.

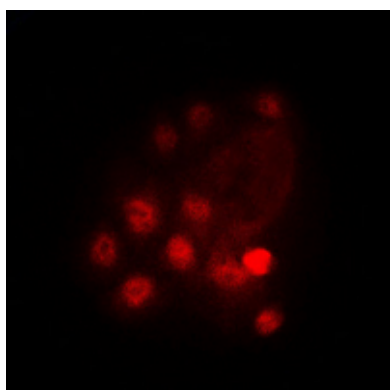
Background

KLH-conjugated synthetic peptide encompassing a sequence within the center region of human GATA3 (pS308). The exact sequence is proprietary.

Images



Western blot analysis of GATA3 (pS308) expression in zebrafish (A) whole cell lysates.



Immunofluorescent analysis of GATA3 (pS308) staining in HuvEc cells. Formalin-fixed cells were permeabilized with 0.1% Triton X-100 in TBS for 5-10 minutes and blocked with 3% BSA-PBS for 30 minutes at room temperature. Cells were probed with the primary antibody in 3% BSA-PBS and incubated overnight at 4 °C in a humidified chamber. Cells were washed with PBST and incubated with a DyLight 594-conjugated secondary antibody (red) in PBS at room temperature in the dark. DAPI was used to stain the cell nuclei (blue).

Please note: All products are 'FOR RESEARCH USE ONLY. NOT FOR USE IN DIAGNOSTIC OR THERAPEUTIC PROCEDURES'.