

Anti-GCLM Antibody

Rabbit polyclonal antibody to GCLM

Catalog # AP60293

Product Information

Application	WB, IHC
Primary Accession	P48507
Other Accession	O09172
Reactivity	Human, Mouse, Rat, Bovine
Host	Rabbit
Clonality	Polyclonal
Calculated MW	30727

Additional Information

Gene ID	2730
Other Names	GLCLR; Glutamate--cysteine ligase regulatory subunit; GCS light chain; Gamma-ECS regulatory subunit; Gamma-glutamylcysteine synthetase regulatory subunit; Glutamate--cysteine ligase modifier subunit
Target/Specificity	Recognizes endogenous levels of GCLM protein.
Dilution	WB~~WB (1/500 - 1/1000), IHC (1/100 - 1/200) IHC~~WB (1/500 - 1/1000), IHC (1/100 - 1/200)
Format	Liquid in 0.42% Potassium phosphate, 0.87% Sodium chloride, pH 7.3, 30% glycerol, and 0.09% (W/V) sodium azide.
Storage	Store at -20 °C.Stable for 12 months from date of receipt

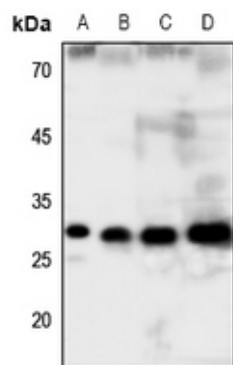
Protein Information

Name	GCLM
Synonyms	GLCLR
Tissue Location	In all tissues examined. Highest levels in skeletal muscle

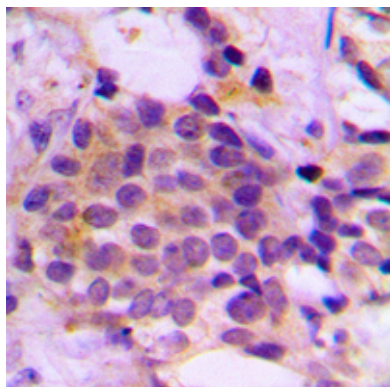
Background

KLH-conjugated synthetic peptide encompassing a sequence within the center region of human GCLM. The exact sequence is proprietary.

Images



Western blot analysis of GCLM expression in HEK293T (A), mouse liver (B), rat liver (C), rat kidney (D) whole cell lysates.



Immunohistochemical analysis of GCLM staining in human prostate cancer formalin fixed paraffin embedded tissue section. The section was pre-treated using heat mediated antigen retrieval with sodium citrate buffer (pH 6.0). The section was then incubated with the antibody at room temperature and detected using an HRP conjugated compact polymer system. DAB was used as the chromogen. The section was then counterstained with haematoxylin and mounted with DPX.

Please note: All products are 'FOR RESEARCH USE ONLY. NOT FOR USE IN DIAGNOSTIC OR THERAPEUTIC PROCEDURES'.