

# Anti-Beta-glucuronidase Antibody

Rabbit polyclonal antibody to Beta-glucuronidase

Catalog # AP60302

## Product Information

---

<b>Application</b>	WB
<b>Primary Accession</b>	<a href="#">P08236</a>
<b>Reactivity</b>	Human, Mouse, Rat, Pig, Drosophila
<b>Host</b>	Rabbit
<b>Clonality</b>	Polyclonal
<b>Calculated MW</b>	74732

## Additional Information

---

<b>Gene ID</b>	2990
<b>Other Names</b>	Beta-glucuronidase; Beta-G1
<b>Target/Specificity</b>	Recognizes endogenous levels of Beta-glucuronidase protein.
<b>Dilution</b>	WB~~WB (1/500 - 1/1000)
<b>Format</b>	Liquid in 0.42% Potassium phosphate, 0.87% Sodium chloride, pH 7.3, 30% glycerol, and 0.09% (W/V) sodium azide.
<b>Storage</b>	Store at -20 °C.Stable for 12 months from date of receipt

## Protein Information

---

<b>Name</b>	GUSB
<b>Function</b>	Plays an important role in the degradation of dermatan and keratan sulfates.
<b>Cellular Location</b>	Lysosome.

## Background

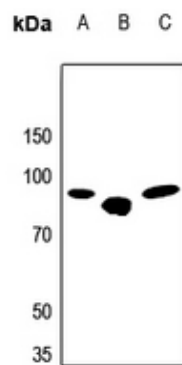
---

KLH-conjugated synthetic peptide encompassing a sequence within the center region of human Beta-glucuronidase. The exact sequence is proprietary.

## Images

---

Western blot analysis of Beta-glucuronidase expression in



Hela (A), mouse liver (B), rat lung (C) whole cell lysates.

Please note: All products are 'FOR RESEARCH USE ONLY. NOT FOR USE IN DIAGNOSTIC OR THERAPEUTIC PROCEDURES'.