

Anti-HOXC6 Antibody

Rabbit polyclonal antibody to HOXC6

Catalog # AP60319

Product Information

Application	WB, IF/IC, IHC
Primary Accession	P09630
Other Accession	P10629
Reactivity	Human, Mouse, Rat, Monkey, SARS
Host	Rabbit
Clonality	Polyclonal
Calculated MW	26915

Additional Information

Gene ID	3223
Other Names	HOX3C; Homeobox protein Hox-C6; Homeobox protein CP25; Homeobox protein HHO.C8; Homeobox protein Hox-3C
Target/Specificity	KLH-conjugated synthetic peptide encompassing a sequence within the C-term region of human HOXC6. The exact sequence is proprietary.
Dilution	WB~~WB (1/500 - 1/1000), IHC (1/100 - 1/200), IF/IC (1/100 - 1/500) IF/IC~~N/A IHC~~WB (1/500 - 1/1000), IHC (1/100 - 1/200), IF/IC (1/100 - 1/500)
Format	Liquid in 0.42% Potassium phosphate, 0.87% Sodium chloride, pH 7.3, 30% glycerol, and 0.09% (W/V) sodium azide.
Storage	Store at -20 °C.Stable for 12 months from date of receipt

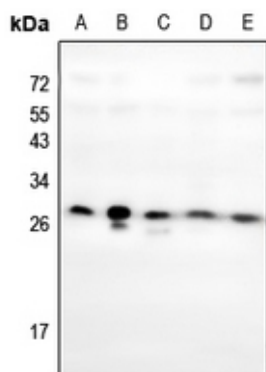
Protein Information

Name	HOXC6
Synonyms	HOX3C
Function	Sequence-specific transcription factor which is part of a developmental regulatory system that provides cells with specific positional identities on the anterior-posterior axis.
Cellular Location	Nucleus.

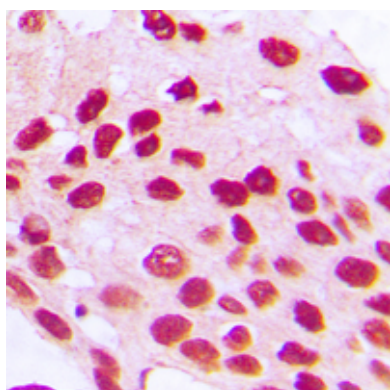
Background

KLH-conjugated synthetic peptide encompassing a sequence within the C-term region of human HOXC6. The exact sequence is proprietary.

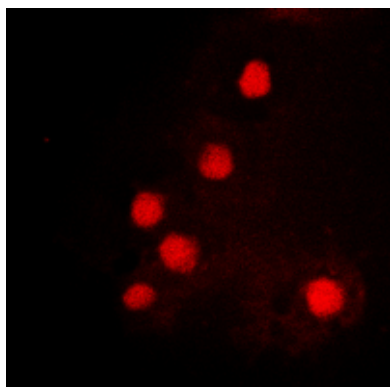
Images



Western blot analysis of HOXC6 expression in A2780 (A), HEK293T (B), PC12 (C), 3T3L1 (D), PC3 (E) whole cell lysates.



Immunohistochemical analysis of HOXC6 staining in human prostate cancer formalin fixed paraffin embedded tissue section. The section was pre-treated using heat mediated antigen retrieval with sodium citrate buffer (pH 6.0). The section was then incubated with the antibody at room temperature and detected using an HRP conjugated compact polymer system. DAB was used as the chromogen. The section was then counterstained with haematoxylin and mounted with DPX.



Immunofluorescent analysis of HOXC6 staining in K562 cells. Formalin-fixed cells were permeabilized with 0.1% Triton X-100 in TBS for 5-10 minutes and blocked with 3% BSA-PBS for 30 minutes at room temperature. Cells were probed with the primary antibody in 3% BSA-PBS and incubated overnight at 4 °C in a humidified chamber. Cells were washed with PBST and incubated with a DyLight 594-conjugated secondary antibody (red) in PBS at room temperature in the dark.

Please note: All products are 'FOR RESEARCH USE ONLY. NOT FOR USE IN DIAGNOSTIC OR THERAPEUTIC PROCEDURES'.