

# Anti-CD218b Antibody

Rabbit polyclonal antibody to CD218b

Catalog # AP60324

## Product Information

Application	WB
Primary Accession	<a href="#">Q95256</a>
Other Accession	<a href="#">Q9Z2B1</a>
Reactivity	Human, Mouse, Rat
Host	Rabbit
Clonality	Polyclonal
Calculated MW	68310

## Additional Information

Gene ID	8807
Other Names	IL1R7; Interleukin-18 receptor accessory protein; IL-18 receptor accessory protein; IL-18RAcP; Accessory protein-like; AcPL; CD218 antigen-like family member B; CDw218b; IL-1R accessory protein-like; IL-1RAcPL; Interleukin-1 receptor 7; IL-1R-7; IL-1R7; Interleukin-18 receptor accessory protein-like; Interleukin-18 receptor beta; IL-18R-beta; IL-18Rbeta; CD218b
Target/Specificity	Recognizes endogenous levels of CD218b protein.
Dilution	WB~~WB (1/500 - 1/1000)
Format	Liquid in 0.42% Potassium phosphate, 0.87% Sodium chloride, pH 7.3, 30% glycerol, and 0.09% (W/V) sodium azide.
Storage	Store at -20 °C.Stable for 12 months from date of receipt

## Protein Information

Name	IL18RAP ( <a href="#">HGNC:5989</a> )
Synonyms	IL1R7
Function	Within the IL18 receptor complex, does not mediate IL18- binding, but involved in IL18-dependent signal transduction, leading to NF-kappa-B and JNK activation (PubMed: <a href="#">14528293</a> , PubMed: <a href="#">25500532</a> , PubMed: <a href="#">9792649</a> ). May play a role in IL18-mediated IFNG synthesis from T-helper 1 (Th1) cells (Probable).
Cellular Location	Cell membrane; Single-pass type I membrane protein  Detected in adrenal gland, bone marrow, brain, fetal brain, fetal liver, heart,

## Tissue Location

kidney, lung, liver, peripheral blood leukocytes, placenta, prostate, salivary gland, skeletal muscle, spinal cord, testis, thymus, thyroid, trachea and uterus (PubMed:17897836) Strongly expressed in peripheral blood leukocytes and spleen and, to a lesser extent, in colon (PubMed:9792649). Specifically coexpressed with IL18R1 in T-helper 1 (Th1) cells (PubMed:10653850, PubMed:10925275, PubMed:11046021).

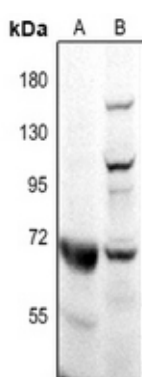
## Background

---

KLH-conjugated synthetic peptide encompassing a sequence within the center region of human CD218b. The exact sequence is proprietary.

## Images

---



Western blot analysis of CD218b expression in rat kidney (A), mouse brain (B) whole cell lysates.

Please note: All products are 'FOR RESEARCH USE ONLY. NOT FOR USE IN DIAGNOSTIC OR THERAPEUTIC PROCEDURES'.