

# Anti-LMO7 Antibody

Rabbit polyclonal antibody to LMO7

Catalog # AP60333

## Product Information

---

<b>Application</b>	WB
<b>Primary Accession</b>	<a href="#">Q8WWI1</a>
<b>Reactivity</b>	Human, Mouse, Rat
<b>Host</b>	Rabbit
<b>Clonality</b>	Polyclonal
<b>Calculated MW</b>	192696

## Additional Information

---

<b>Gene ID</b>	4008
<b>Other Names</b>	FBX20; FBXO20; KIAA0858; LIM domain only protein 7; LMO-7; F-box only protein 20; LOMP
<b>Target/Specificity</b>	KLH-conjugated synthetic peptide encompassing a sequence within the center region of human LMO7. The exact sequence is proprietary.
<b>Dilution</b>	WB~~WB (1/500 - 1/1000)
<b>Format</b>	Liquid in 0.42% Potassium phosphate, 0.87% Sodium chloride, pH 7.3, 30% glycerol, and 0.09% (W/V) sodium azide.
<b>Storage</b>	Store at -20 °C.Stable for 12 months from date of receipt

## Protein Information

---

<b>Name</b>	LMO7
<b>Synonyms</b>	FBX20, FBXO20, KIAA0858
<b>Tissue Location</b>	Widely expressed. Isoform 2 and isoform 4 are predominantly expressed in brain.

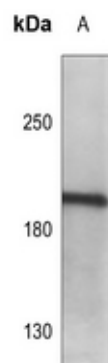
## Background

---

KLH-conjugated synthetic peptide encompassing a sequence within the center region of human LMO7. The exact sequence is proprietary.

## Images

---



Western blot analysis of LMO7 expression in U87MG (A) whole cell lysates.

Please note: All products are 'FOR RESEARCH USE ONLY. NOT FOR USE IN DIAGNOSTIC OR THERAPEUTIC PROCEDURES'.