

Anti-MYL3 Antibody

Rabbit polyclonal antibody to MYL3
Catalog # AP60342

Product Information

Application	WB, IP
Primary Accession	P08590
Reactivity	Human, Mouse
Host	Rabbit
Clonality	Polyclonal
Calculated MW	21932

Additional Information

Gene ID	4634
Other Names	Myosin light chain 3; Cardiac myosin light chain 1; CMLC1; Myosin light chain 1, slow-twitch muscle B/ventricular isoform; MLC1SB; Ventricular/slow twitch myosin alkali light chain
Target/Specificity	KLH-conjugated synthetic peptide encompassing a sequence within the center region of human MYL3. The exact sequence is proprietary.
Dilution	WB~~WB (1/500 - 1/1000), IP (1/10 - 1/100) IP~~N/A
Format	Liquid in 0.42% Potassium phosphate, 0.87% Sodium chloride, pH 7.3, 30% glycerol, and 0.09% (W/V) sodium azide.
Storage	Store at -20 °C. Stable for 12 months from date of receipt

Protein Information

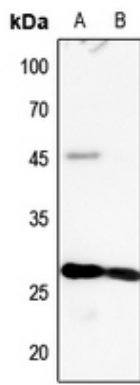
Name	MYL3 (HGNC:7584)
Function	Regulatory light chain of myosin. Does not bind calcium.

Background

KLH-conjugated synthetic peptide encompassing a sequence within the center region of human MYL3. The exact sequence is proprietary.

Images

Western blot analysis of MYL3 expression in mouse heart



(A), mouse kidney (B) whole cell lysates.

Please note: All products are 'FOR RESEARCH USE ONLY. NOT FOR USE IN DIAGNOSTIC OR THERAPEUTIC PROCEDURES'.