

Anti-NDUFA3 Antibody

Rabbit polyclonal antibody to NDUFA3

Catalog # AP60345

Product Information

Application	WB, IHC
Primary Accession	Q95167
Other Accession	Q9CQ91
Reactivity	Human, Mouse, Rat
Host	Rabbit
Clonality	Polyclonal
Calculated MW	9279

Additional Information

Gene ID	4696
Other Names	NADH dehydrogenase [ubiquinone] 1 alpha subcomplex subunit 3; Complex I-B9; CI-B9; NADH-ubiquinone oxidoreductase B9 subunit
Target/Specificity	KLH-conjugated synthetic peptide encompassing a sequence within the center region of human NDUFA3. The exact sequence is proprietary.
Dilution	WB~~WB (1/500 - 1/1000), IHC (1/100 - 1/200) IHC~~WB (1/500 - 1/1000), IHC (1/100 - 1/200)
Format	Liquid in 0.42% Potassium phosphate, 0.87% Sodium chloride, pH 7.3, 30% glycerol, and 0.09% (W/V) sodium azide.
Storage	Store at -20 °C.Stable for 12 months from date of receipt

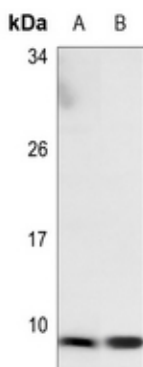
Protein Information

Name	NDUFA3
Function	Accessory subunit of the mitochondrial membrane respiratory chain NADH dehydrogenase (Complex I), that is believed not to be involved in catalysis. Complex I functions in the transfer of electrons from NADH to the respiratory chain. The immediate electron acceptor for the enzyme is believed to be ubiquinone.
Cellular Location	Mitochondrion inner membrane; Single-pass membrane protein

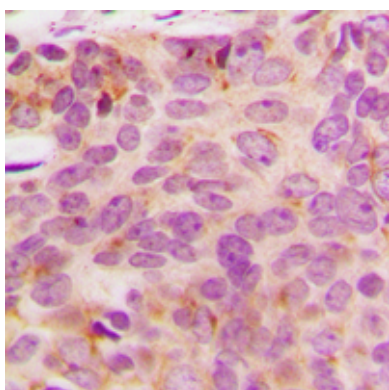
Background

KLH-conjugated synthetic peptide encompassing a sequence within the center region of human NDUFA3. The exact sequence is proprietary.

Images



Western blot analysis of NDUFA3 expression in mouse heart (A), rat heart (B) whole cell lysates.



Immunohistochemical analysis of NDUFA3 staining in human breast cancer formalin fixed paraffin embedded tissue section. The section was pre-treated using heat mediated antigen retrieval with sodium citrate buffer (pH 6.0). The section was then incubated with the antibody at room temperature and detected using an HRP conjugated compact polymer system. DAB was used as the chromogen. The section was then counterstained with haematoxylin and mounted with DPX.

Please note: All products are 'FOR RESEARCH USE ONLY. NOT FOR USE IN DIAGNOSTIC OR THERAPEUTIC PROCEDURES'.