

Anti-NDUFB9 Antibody

Rabbit polyclonal antibody to NDUFB9

Catalog # AP60346

Product Information

Application	WB, IHC
Primary Accession	Q9Y6M9
Other Accession	Q9CQJ8
Reactivity	Human, Mouse, Rat, Monkey, Bovine
Host	Rabbit
Clonality	Polyclonal
Calculated MW	21831

Additional Information

Gene ID	4715
Other Names	LYRM3; UQOR22; NADH dehydrogenase [ubiquinone] 1 beta subcomplex subunit 9; Complex I-B22; CI-B22; LYR motif-containing protein 3; NADH-ubiquinone oxidoreductase B22 subunit
Target/Specificity	Recognizes endogenous levels of NDUFB9 protein.
Dilution	WB~~WB (1/500 - 1/1000), IHC (1/100 - 1/200) IHC~~WB (1/500 - 1/1000), IHC (1/100 - 1/200)
Format	Liquid in 0.42% Potassium phosphate, 0.87% Sodium chloride, pH 7.3, 30% glycerol, and 0.09% (W/V) sodium azide.
Storage	Store at -20 °C.Stable for 12 months from date of receipt

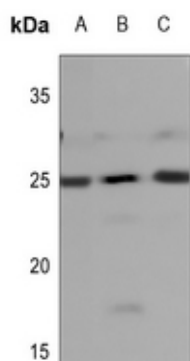
Protein Information

Name	NDUFB9
Synonyms	LYRM3, UQOR22
Function	Accessory subunit of the mitochondrial membrane respiratory chain NADH dehydrogenase (Complex I), that is believed to be not involved in catalysis. Complex I functions in the transfer of electrons from NADH to the respiratory chain. The immediate electron acceptor for the enzyme is believed to be ubiquinone.
Cellular Location	Mitochondrion inner membrane; Peripheral membrane protein; Matrix side

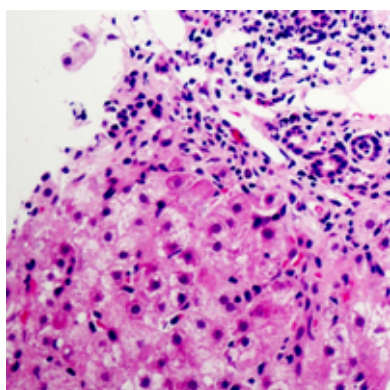
Background

KLH-conjugated synthetic peptide encompassing a sequence within the center region of human NDUFB9. The exact sequence is proprietary.

Images



Western blot analysis of NDUFB9 expression in mouse kidney (A), rat kidney (B), rat heart (C) whole cell lysates.



Immunohistochemical analysis of NDUFB9 staining in human liver cancer formalin fixed paraffin embedded tissue section. The section was pre-treated using heat mediated antigen retrieval with sodium citrate buffer (pH 6.0). The section was then incubated with the antibody at room temperature and detected using an HRP conjugated compact polymer system. DAB was used as the chromogen. The section was then counterstained with haematoxylin and mounted with DPX.

Please note: All products are 'FOR RESEARCH USE ONLY. NOT FOR USE IN DIAGNOSTIC OR THERAPEUTIC PROCEDURES'.