

# Anti-pro-NGF beta Antibody

Rabbit polyclonal antibody to pro-NGF beta  
Catalog # AP60349

## Product Information

---

Application	WB
Primary Accession	<a href="#">P01138</a>
Other Accession	<a href="#">P01139</a>
Reactivity	Human, Mouse, Rat
Host	Rabbit
Clonality	Polyclonal
Calculated MW	26959

## Additional Information

---

Gene ID	4803
Other Names	NGFB; Beta-nerve growth factor; Beta-NGF
Target/Specificity	KLH-conjugated synthetic peptide encompassing a sequence within the center region of human pro-NGF beta. The exact sequence is proprietary.
Dilution	WB~~WB (1/500 - 1/1000)
Format	Liquid in 0.42% Potassium phosphate, 0.87% Sodium chloride, pH 7.3, 30% glycerol, and 0.09% (W/V) sodium azide.
Storage	Store at -20 °C.Stable for 12 months from date of receipt

## Protein Information

---

Name	NGF
Synonyms	NGFB
Function	Nerve growth factor is important for the development and maintenance of the sympathetic and sensory nervous systems (PubMed: <a href="#">14976160</a> , PubMed: <a href="#">20978020</a> ). Extracellular ligand for the NTRK1 and NGFR receptors, activates cellular signaling cascades to regulate neuronal proliferation, differentiation and survival (Probable) (PubMed: <a href="#">20978020</a> ). The immature NGF precursor (proNGF) functions as a ligand for the heterodimeric receptor formed by SORCS2 and NGFR, and activates cellular signaling cascades that lead to inactivation of RAC1 and/or RAC2, reorganization of the actin cytoskeleton and neuronal growth cone collapse. In contrast to mature NGF, the precursor form (proNGF) promotes neuronal apoptosis (in vitro) (By similarity). Inhibits metalloproteinase-dependent proteolysis of platelet glycoprotein VI (PubMed: <a href="#">20164177</a> ). Binds lysophosphatidylinositol and

lysophosphatidylserine between the two chains of the homodimer. The lipid-bound form promotes histamine release from mast cells, contrary to the lipid-free form (By similarity).

#### Cellular Location

Secreted. Endosome lumen {ECO:0000250|UniProtKB:P01139}. Note=ProNGF is endocytosed after binding to the cell surface receptor formed by SORT1 and NGFR {ECO:0000250|UniProtKB:P01139}

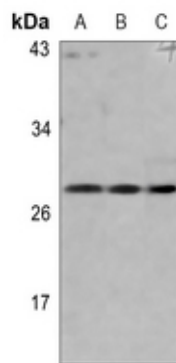
## Background

---

KLH-conjugated synthetic peptide encompassing a sequence within the center region of human pro-NGF beta. The exact sequence is proprietary.

## Images

---



Western blot analysis of pro-NGF beta expression in H1792 (A), mouse lung (B), rat lung (C) whole cell lysates.

Please note: All products are 'FOR RESEARCH USE ONLY. NOT FOR USE IN DIAGNOSTIC OR THERAPEUTIC PROCEDURES'.