

Anti-NPDC1 Antibody

Rabbit polyclonal antibody to NPDC1

Catalog # AP60351

Product Information

Application	WB, IHC
Primary Accession	Q9NQX5
Other Accession	Q64322
Reactivity	Human, Mouse, Rat
Host	Rabbit
Clonality	Polyclonal
Calculated MW	34516

Additional Information

Gene ID	56654
Other Names	Neural proliferation differentiation and control protein 1; NPDC-1
Target/Specificity	Recognizes endogenous levels of NPDC1 protein.
Dilution	WB~~WB (1/500 - 1/1000), IHC (1/100 - 1/200) IHC~~WB (1/500 - 1/1000), IHC (1/100 - 1/200)
Format	Liquid in 0.42% Potassium phosphate, 0.87% Sodium chloride, pH 7.3, 30% glycerol, and 0.09% (W/V) sodium azide.
Storage	Store at -20 °C.Stable for 12 months from date of receipt

Protein Information

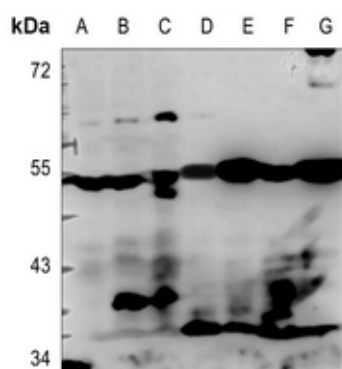
Name	NPDC1
Function	Suppresses oncogenic transformation in neural and non-neural cells and down-regulates neural cell proliferation. Might be involved in transcriptional regulation (By similarity).
Cellular Location	Membrane; Single-pass membrane protein
Tissue Location	Strongly expressed in adult brain; especially in hippocampus, frontal lobe and temporal lobe

Background

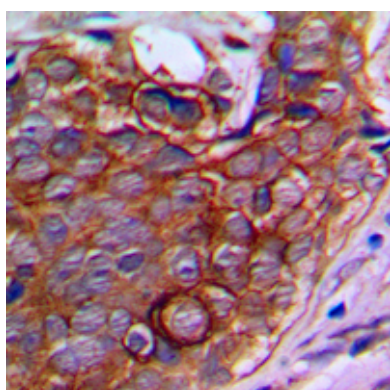
KLH-conjugated synthetic peptide encompassing a sequence within the center region of human NPDC1. The

exact sequence is proprietary.

Images



Western blot analysis of NPDC1 expression in HEK293T (A), H1792 (B), PC12 (C), mouse lung (D), mouse heart (E), rat testis (F), rat heart (G) whole cell lysates.



Immunohistochemical analysis of NPDC1 staining in human prostate cancer formalin fixed paraffin embedded tissue section. The section was pre-treated using heat mediated antigen retrieval with sodium citrate buffer (pH 6.0). The section was then incubated with the antibody at room temperature and detected using an HRP conjugated compact polymer system. DAB was used as the chromogen. The section was then counterstained with haematoxylin and mounted with DPX.

Please note: All products are 'FOR RESEARCH USE ONLY. NOT FOR USE IN DIAGNOSTIC OR THERAPEUTIC PROCEDURES'.