

Anti-CD73 Antibody

Rabbit polyclonal antibody to CD73

Catalog # AP60354

Product Information

Application	WB
Primary Accession	P21589
Reactivity	Human, Mouse
Host	Rabbit
Clonality	Polyclonal
Calculated MW	63368

Additional Information

Gene ID	4907
Other Names	NT5; NTE; 5'-nucleotidase; 5'-NT; Ecto-5'-nucleotidase; CD73
Target/Specificity	KLH-conjugated synthetic peptide encompassing a sequence within the center region of human CD73. The exact sequence is proprietary.
Dilution	WB~~WB (1/500 - 1/1000)
Format	Liquid in 0.42% Potassium phosphate, 0.87% Sodium chloride, pH 7.3, 30% glycerol, and 0.09% (W/V) sodium azide.
Storage	Store at -20 °C.Stable for 12 months from date of receipt

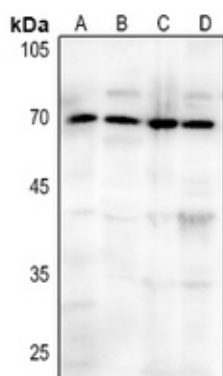
Protein Information

Name	NT5E
Synonyms	NT5, NTE
Function	Catalyzes the hydrolysis of nucleotide monophosphates, releasing inorganic phosphate and the corresponding nucleoside, with AMP being the preferred substrate (PubMed: 21933152 , PubMed: 22997138 , PubMed: 23142347 , PubMed: 24887587 , PubMed: 34403084). Shows a preference for ribonucleotide monophosphates over their equivalent deoxyribose forms (PubMed: 34403084). Other substrates include IMP, UMP, GMP, CMP, dAMP, dCMP, dTMP, NAD and NMN (PubMed: 21933152 , PubMed: 22997138 , PubMed: 23142347 , PubMed: 24887587 , PubMed: 34403084).
Cellular Location	Cell membrane; Lipid-anchor, GPI-anchor

Background

KLH-conjugated synthetic peptide encompassing a sequence within the center region of human CD73. The exact sequence is proprietary.

Images



Western blot analysis of CD73 expression in HEK293T (A), mouse muscle (B), mouse spleen (C), mouse lung (D) whole cell lysates.

Please note: All products are 'FOR RESEARCH USE ONLY. NOT FOR USE IN DIAGNOSTIC OR THERAPEUTIC PROCEDURES'.