

# Anti-POLR2E Antibody

Rabbit polyclonal antibody to POLR2E

Catalog # AP60363

## Product Information

Application	WB, IHC
Primary Accession	<a href="#">P19388</a>
Other Accession	<a href="#">Q80UW8</a>
Reactivity	Human, Mouse, Rat, Monkey, Bovine
Host	Rabbit
Clonality	Polyclonal
Calculated MW	24551

## Additional Information

Gene ID	5434
Other Names	DNA-directed RNA polymerases I, II, and III subunit RPABC1; RNA polymerases I, II, and III subunit ABC1; DNA-directed RNA polymerase II 23 kDa polypeptide; DNA-directed RNA polymerase II subunit E; RPB5 homolog; XAP4
Target/Specificity	Recognizes endogenous levels of POLR2E protein.
Dilution	WB~~WB (1/500 - 1/1000), IHC (1/100 - 1/200) IHC~~WB (1/500 - 1/1000), IHC (1/100 - 1/200)
Format	Liquid in 0.42% Potassium phosphate, 0.87% Sodium chloride, pH 7.3, 30% glycerol, and 0.09% (W/V) sodium azide.
Storage	Store at -20 °C.Stable for 12 months from date of receipt

## Protein Information

Name	POLR2E ( <a href="#">HGNC:9192</a> )
Function	<p>DNA-dependent RNA polymerase catalyzes the transcription of DNA into RNA using the four ribonucleoside triphosphates as substrates. Common component of RNA polymerases I, II and III which synthesize ribosomal RNA precursors, mRNA precursors and many functional non- coding RNAs, and small RNAs, such as 5S rRNA and tRNAs, respectively. Pol II is the central component of the basal RNA polymerase II transcription machinery. Pols are composed of mobile elements that move relative to each other. In Pol II, POLR2E/RPABC1 is part of the lower jaw surrounding the central large cleft and thought to grab the incoming DNA template.</p> <p>Nucleus. Nucleus, nucleolus</p>

## Cellular Location

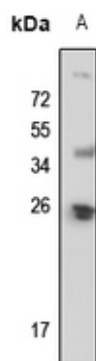
## Background

---

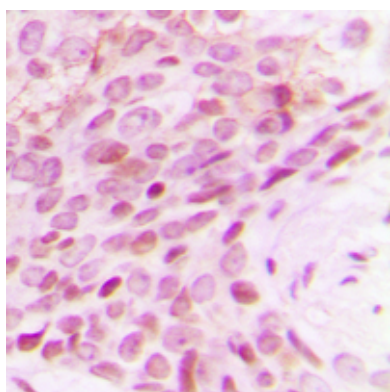
KLH-conjugated synthetic peptide encompassing a sequence within the center region of human POLR2E. The exact sequence is proprietary.

## Images

---



Western blot analysis of POLR2E expression in mouse kidney (A) whole cell lysates.



Immunohistochemical analysis of POLR2E staining in human breast cancer formalin fixed paraffin embedded tissue section. The section was pre-treated using heat mediated antigen retrieval with sodium citrate buffer (pH 6.0). The section was then incubated with the antibody at room temperature and detected using an HRP conjugated compact polymer system. DAB was used as the chromogen. The section was then counterstained with haematoxylin and mounted with DPX.

Please note: All products are 'FOR RESEARCH USE ONLY. NOT FOR USE IN DIAGNOSTIC OR THERAPEUTIC PROCEDURES'.