

# Anti-PPP2R5D Antibody

Rabbit polyclonal antibody to PPP2R5D

Catalog # AP60366

## Product Information

---

<b>Application</b>	WB, IHC
<b>Primary Accession</b>	<a href="#">Q14738</a>
<b>Reactivity</b>	Human, Mouse, Monkey, Bovine
<b>Host</b>	Rabbit
<b>Clonality</b>	Polyclonal
<b>Calculated MW</b>	69992

## Additional Information

---

<b>Gene ID</b>	5528
<b>Other Names</b>	Serine/threonine-protein phosphatase 2A 56 kDa regulatory subunit delta isoform; PP2A B subunit isoform B'-delta; PP2A B subunit isoform B56-delta; PP2A B subunit isoform PR61-delta; PP2A B subunit isoform R5-delta
<b>Target/Specificity</b>	Recognizes endogenous levels of PPP2R5D protein.
<b>Dilution</b>	WB~~WB (1/500 - 1/1000), IHC (1/100 - 1/200) IHC~~WB (1/500 - 1/1000), IHC (1/100 - 1/200)
<b>Format</b>	Liquid in 0.42% Potassium phosphate, 0.87% Sodium chloride, pH 7.3, 30% glycerol, and 0.09% (W/V) sodium azide.
<b>Storage</b>	Store at -20 °C.Stable for 12 months from date of receipt

## Protein Information

---

<b>Name</b>	PPP2R5D
<b>Function</b>	The B regulatory subunit might modulate substrate selectivity and catalytic activity, and might also direct the localization of the catalytic enzyme to a particular subcellular compartment.
<b>Cellular Location</b>	Cytoplasm. Nucleus. Note=Nuclear in interphase, nuclear during mitosis
<b>Tissue Location</b>	Isoform Delta-2 is widely expressed. Isoform Delta- 1 is highly expressed in brain

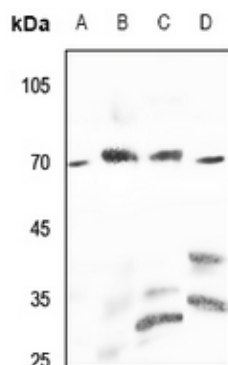
## Background

---

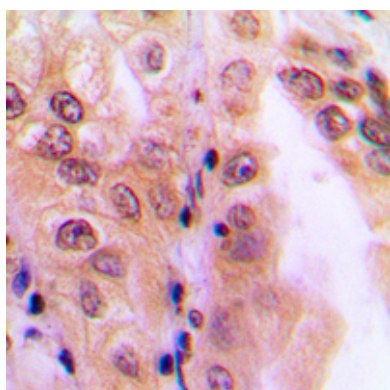
KLH-conjugated synthetic peptide encompassing a sequence within the C-term region of human PPP2R5D. The exact sequence is proprietary.

## Images

---



Western blot analysis of PPP2R5D expression in HEK293 (A), LOVO (B), mouse brain (C), mouse kidney (D) whole cell lysates.



Immunohistochemical analysis of PPP2R5D staining in human lung cancer formalin fixed paraffin embedded tissue section. The section was pre-treated using heat mediated antigen retrieval with sodium citrate buffer (pH 6.0). The section was then incubated with the antibody at room temperature and detected using an HRP conjugated compact polymer system. DAB was used as the chromogen. The section was then counterstained with haematoxylin and mounted with DPX.

Please note: All products are 'FOR RESEARCH USE ONLY. NOT FOR USE IN DIAGNOSTIC OR THERAPEUTIC PROCEDURES'.